

your move

# **Nylon** **Stock List 2012**



# Hobson Engineering Co. Pty. Ltd

A.B.N. 38 000 289 958

## Quality Fasteners Since 1935

### Sydney

10 Clay Place  
Eastern Creek NSW 2766

Ph: (02) 8818 0222

Fax: (02) 9620 1850

email: salesnsw@hobson.com.au

### Brisbane

56 Axis Place  
Larapinta Qld 4110

Ph: (07) 3273 0777

Fax: (07) 3711 4551

email: salesqld@hobson.com.au

### Melbourne

Unit 1 155 Abbots Road  
Dandenong South Vic 3175

Ph: (03) 9797 3333

Fax: (03) 9799 3081

email: salesvic@hobson.com.au

### Perth

133 Beringarra Ave  
Malaga WA 6090

Ph: (08) 9241 9888

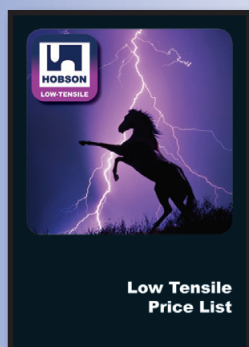
Fax: (08) 9248 8806

email: saleswa@hobson.com.au

[www.hobson.com.au](http://www.hobson.com.au)

Published by Hobson Engineering Co. Pty. Ltd.  
P.O. Box 320  
Horsley Park N.S.W. 2175

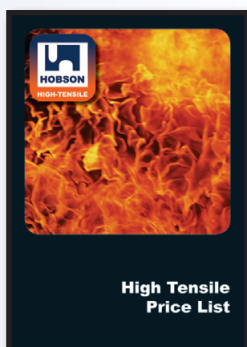
Look out for other released Hobson Publications.



Low Tensile  
Price List



Stainless Fasteners  
Price List



High Tensile  
Price List



Stainless Hardware  
Price List



Cyclone  
Price List

All rights reserved. Hobson Engineering Co. Pty. Ltd. is the owner of the copyright subsisting in this publication. Other than permitted by the Copyright Act, no part of this publication can be reproduced, copied or transmitted, in any form or by any means (electric, mechanical, photocopying, recording, storage in a retrieval system or otherwise), without the prior written consent of Hobson Engineering Co. Pty. Ltd. Hobson Engineering Co. Pty. Ltd. will vigorously pursue any breach of its copyright.

This publication is distributed on the basis and understanding that the publisher is not responsible for the results of any actions taken on the basis of information in this publication, nor for any error in or omission from this publication. The publisher expressly disclaims all and any liability and responsibility to any person, whether a reader of this publication or not, in respect of anything, and the consequences of anything, done or omitted to be done by any such person in reliance, whether wholly or partially, upon the whole or any part of the contents of this publication. Without limiting the generality of the foregoing the publisher accepts no liability for any loss or damage either direct or consequential arising out of or in relation to the use or application of the information or products referred to herein.

Since 1935 ...because quality matters

# Index



<b>Allthread</b>		<b>2</b>
<b>Nuts</b>	   	<b>3</b>
<b>Washers</b>	   	<b>5</b>
<b>Spacers</b>	 	<b>10</b>
<b>Bushings</b>	 	<b>11</b>
<b>Set Screws</b>		<b>12</b>
<b>Socket Head Screws</b>		<b>15</b>
<b>Grub Screws</b>	 	<b>17</b>
<b>Socket / Slotted</b>	 	
<b>Machine Screws</b>	  	<b>20</b>
<b>Wing Screws</b>		<b>24</b>



# Allthread Rod

## ALLTHREAD ROD NYLON DIN975

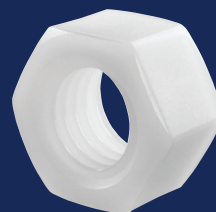
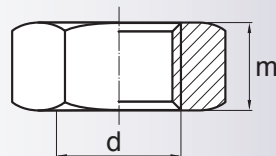
Part	Size	Length (mm)	Pack
AN66PCM041000	M4	1000	1
AN66PCM051000	M5	1000	1
AN66PCM061000	M6	1000	1
AN66PCM081000	M8	1000	1
AN66PCM101000	M10	1000	1
AN66PCM121000	M12	1000	1
AN66PCM141000	M14	1000	1
AN66PCM161000	M16	1000	1
AN66PCM181000	M18	1000	1
AN66PCM201000	M20	1000	1
AN66PCM221000	M22	1000	1
AN66PCM241000	M24	1000	1
AN66PCM271000	M27	1000	1
AN66PCM301000	M30	1000	1

# Hex / Flange Nut



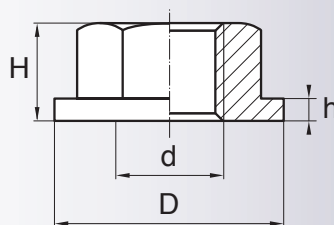
## HEX NUT NYLON DIN934

Part	Size	m	Pack
NH66PCM02	M2	1.6	100
NH66PCM025	M2.5	2.0	100
NH66PCM03	M3	2.4	100
NH66PCM04	M4	3.2	100
NH66PCM05	M5	4.0	100
NH66PCM06	M6	5.0	100
NH66PCM08	M8	6.5	100
NH66PCM10	M10	8.0	50
NH66PCM12	M12	10.0	50
NH66PCM14	M14	11.0	25
NH66PCM16	M16	13.0	25
NH66PCM18	M18	15.0	25
NH66PCM20	M20	16.0	25
NH66PCM24	M24	19.0	25
NH66PCM30	M30	24.0	10

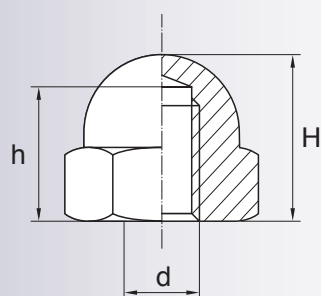
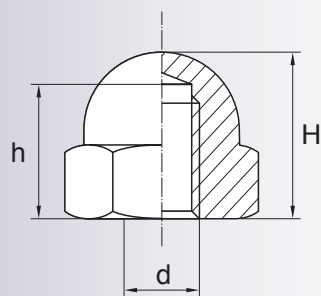
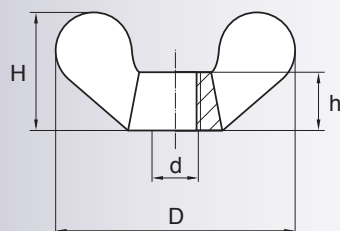


## HEX FLANGE NUT NYLON HEC SPEC

Part	Size	D	h	H	Pack
NF66PCM04	M4	9.5	1.1	4.2	100
NF66PCM05	M5	11.0	1.0	5.2	100
NF66PCM06	M6	13.0	1.2	6.0	100
NF66PCM08	M8	16.8	1.4	7.35	100
NF66PCM10	M10	21.7	1.8	9.5	50
NF66PCM12	M12	27.1	3.0	12.7	50
NF66PCM16	M16	35.0	3.0	16.6	25
NF66PCM20	M20	44.0	3.5	20.0	25
NF66PCM24	M24	53.0	4.0	23.8	25



# Wing / Hex Dome Nut



## WING NUT NYLON DIN 315

Part	Size	D	h	H	Pack
NW66PCM04	M4	15.0	5.0	10.0	100
NW66PCM05	M5	28.3	8.2	16.0	100
NW66PCM06	M6	28.3	8.2	16.0	100
NW66PCM08	M8	35.8	10.0	19.8	100
NW66PCM10	M10	43.5	10.0	24.8	50

## HEX DOME NUT NYLON DIN1587

Part	Size	h	H	Pack
ND66PCM03	M3	5.0	6.3	100
ND66PCM04	M4	5.5	8.0	100
ND66PCM05	M5	7.5	10.0	100
ND66PCM06	M6	8.0	12.0	100
ND66PCM08	M8	11.0	15.0	100
ND66PCM10	M10	13.0	18.0	50
ND66PCM12	M12	16.0	22.0	50
ND66PCM16	M16	21.0	28.0	25

## HEX DOME NUT NYLON FORM 'A' HEC SPEC

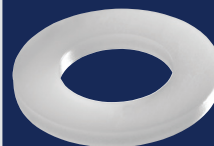
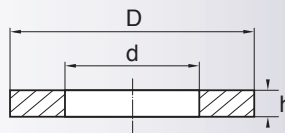
Part	Size	h	H	Pack
ND66PAM20	M20	16.0	34.0	25

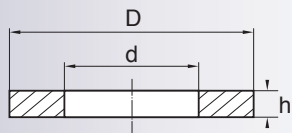
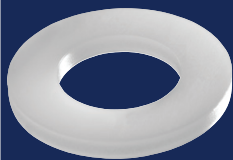
# Round Washer



## FLAT ROUND WASHER NYLON HEC SPEC

Part	Size	d	D	h	Pack
WR66PM020050003	M2	2.2	5.0	0.3	200
WR66PM020050008	M2	2.2	5.0	0.8	200
WR66PM0250056008	M2	2.6	5.6	0.8	200
WR66PM0250060005	M2	2.6	6.0	0.5	200
WR66PM0250060006	M2	2.7	6.0	0.6	200
WR66PM030070005	M3	2.7	7.0	0.5	200
WR66PM030080008	M3	3.2	8.0	0.8	200
WR66PM030090008	M3	3.2	9.0	0.8	200
WR66PM0350080005	M3	3.7	8.0	0.5	200
WR66PM0350080008	M3	3.7	8.0	0.8	200
WR66PM040070008	M4	4.3	7.0	0.8	200
WR66PM040090008	M4	4.3	9.0	0.8	200
WR66PM040120010	M4	4.3	12.0	1.0	200
WR66PM040120012	M4	4.3	12.0	1.2	200
WR66PM040160015	M4	4.3	16.0	1.5	200
WR66PM050090010	M5	5.3	9.0	1.0	200
WR66PM050100010	M5	5.3	10.0	1.0	200
WR66PM050112008	M5	5.3	11.2	0.8	200
WR66PM050112010	M5	5.3	11.2	1.0	200
WR66PM050150012	M5	5.3	15.0	1.2	200
WR66PM050150015	M5	5.3	15.0	1.5	200





# Round Washer

## FLAT ROUND WASHER NYLON HEC SPEC

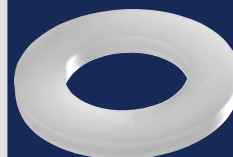
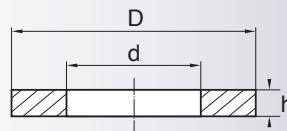
Part	Size	d	D	h	Pack
WR66PM060100016	M6	6.2	10.0	1.6	200
WR66PM060120010	M6	6.4	11.0	1.6	200
WR66PM060120010	M6	6.4	12.0	1.0	200
WR66PM060120015	M6	6.4	12.0	1.5	200
WR66PM060125015	M6	6.4	12.5	1.6	200
WR66PM060125016	M6	6.4	12.5	1.6	200
WR66PM060140008	M6	6.4	14.0	0.8	200
WR66PM060140010	M6	6.4	14.0	1.0	200
WR66PM060140012	M6	6.4	14.0	1.2	200
WR66PM060140016	M6	6.4	14.0	1.6	200
WR66PM060180016	M6	6.4	18.0	1.6	200
WR66PM060320016	M6	6.4	32.0	1.6	200
WR66PM070140016	M7	7.4	14.0	1.6	100
WR66PM080160010	M8	8.4	16.0	1.0	100
WR66PM080160016	M8	8.4	16.0	1.6	100
WR66PM080170010	M8	8.4	17.0	1.0	100
WR66PM080170016	M8	8.4	17.0	1.6	100
WR66PM080170020	M8	8.4	17.0	2.0	100
WR66PM080180016	M8	8.4	18.0	1.6	100
WR66PM080180020	M8	8.4	18.0	2.0	100
WR66PM080210020	M8	8.4	21.0	2.0	100
WR66PM080240020	M8	8.4	24.0	2.0	100
WR66PM080250020	M8	8.4	25.0	2.0	100
WR66PM100200020	M10	10.5	20.0	2.0	100
WR66PM100200250	M10	10.5	20.0	2.5	100
WR66PM100210010	M10	10.5	21.0	1.0	100
WR66PM100210015	M10	10.5	21.0	1.5	100
WR66PM100210020	M10	10.5	21.0	2.0	100
WR66PM100220020	M10	10.5	22.0	2.0	100
WR66PM100220025	M10	10.5	22.0	2.5	100
WR66PM100240020	M10	10.5	24.0	2.0	100
WR66PM100300025	M10	10.5	30.0	2.5	100
WR66PM100320016	M10	10.5	32.0	1.6	100
WR66PM100500030	M10	10.5	50.0	3.0	100

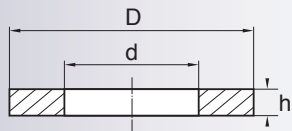
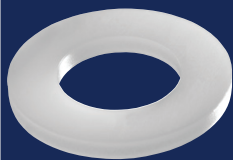
# Round Washer



## FLAT ROUND WASHER NYLON HEC SPEC

Part	Size	d	D	h	Pack
WR66PM120240020	M12	13.0	24.0	2.0	100
WR66PM120240025	M12	13.0	24.0	2.5	100
WR66PM120250015	M12	13.0	25.0	1.5	100
WR66PM120370030	M12	13.0	37.0	3.0	100
WR66PM120400030	M12	13.0	40.0	3.0	100
WR66PM140280025	M14	15.0	28.0	2.5	100
WR66PM140440030	M14	15.0	44.0	3.0	100
WR66PM160300020	M16	17.0	30.0	2.0	100
WR66PM160300030	M16	17.0	30.0	3.0	100
WR66PM180340030	M18	19.0	34.0	3.0	100
WR66PM200370030	M20	21.0	37.0	3.0	100
WR66PM200390030	M20	21.0	39.0	3.0	100
WR66PM200600040	M20	21.0	60.0	4.0	100
WR66PM220390040	M22	23.0	39.0	4.0	50
WR66PM240440040	M24	25.0	44.0	4.0	50
WR66PM240500040	M24	25.0	50.0	4.0	50
WR66PM240720050	M24	26.0	72.0	5.0	50
WR66PM270500040	M27	28.0	50.0	4.0	50
WR66PM300560040	M30	31.0	56.0	4.0	50
WR66PM330600050	M33	34.0	60.0	5.0	50
WR66PM330660050	M33	34.0	66.0	5.0	50
WR66PM360660050	M36	37.0	66.0	5.0	50
WR66PM390720050	M39	40.0	72.0	5.0	50
WR66PM420720060	M42	43.0	72.0	6.0	50





# Round Washer

## FLAT ROUND WASHER NYLON HEC SPEC

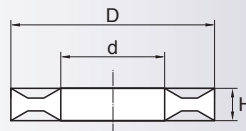
Part	Size	d	D	h	Pack
		(inch)	(inch)	(inch)	
WR66P#08037003	#8	0.171	3/8	1/32	200
WR66P#10037003	#10	0.194	3/8	1/32	200
WR66P018043003	3/16	0.195	7/16	1/32	200
WR66P018050003	3/16	0.195	1/2	1/32	200
WR66P025050003	1/4	0.257	1/2	1/32	200
WR66P025062006	1/4	0.257	5/8	1/16	200
WR66P025075006	1/4	0.257	3/4	1/16	200
WR66P031062006	5/16	0.331	5/8	1/16	100
WR66P037062006	3/8	0.380	5/8	1/16	100
WR66P037075006	3/8	0.390	3/4	1/16	100
WR66P050075006	1/2	0.505	3/4	1/16	100
WR66P050100006	1/2	0.518	2	1/16	100
WR66P062125009	5/8	0.643	1-1/4	3/32	100
WR66P075150009	3/4	0.760	1-1/2	3/32	100
WR66P100150008	1	1.015	1-1/2	5/64	100
WR66P100187012	1	1.028	1-7/8	1/8	100
WR66P012031003	1/8	0.140	5/16	1/32	200
WR66P015037003	5/32	0.165	3/8	1/32	200

# Hubo / Anti-Loss / Cup Washer



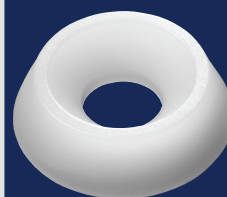
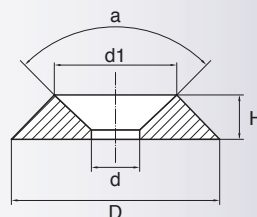
## HUBO WASHER NYLON HEC SPEC

Part	Size	d	D	H	Pack
WR66PHM03	M3	3.1	8.0	2.5	200
WR66PHM04	M4	4.2	10.0	2.8	200
WR66PHM05	M5	5.2	10.7	3.0	200
WR66PHM06	M6	6.2	12.7	3.8	200
WR66PHM08	M8	8.2	16.2	4.2	100
WR66PHM10	M10	10.2	20.0	5.0	100
WR66PHM12	M12	12.2	24.0	5.2	100
WR66PHM16	M16	16.2	30.0	5.7	50
WR66PHM20	M20	20.3	36.0	6.8	50



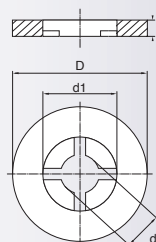
## CUP WASHER NYLON HEC SPEC

Part	Size	d	d1	D	H	a	Pack
WR66PCM03	M3	3.0	6.5	9.2	1.9	90°	200
WR66PCM04	M4	4.3	8.0	11.9	3.0	90°	200
WR66PCM05	M5	5.3	9.8	15.3	3.5	90°	200
WR66PCM06	M6	6.3	11.7	17.0	4.5	90°	200
WR66PCM08	M8	8.0	14.3	22.3	5.9	90°	200



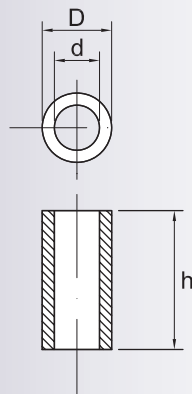
## ANTI-LOSS WASHER NYLON HEC SPEC

Part	Size	d	d1	D	h	Pack
WR66PAM03	M3	2.4	3.9	7.0	1.0	200
WR66PAM04	M4	3.4	5.0	9.0	1.0	200
WR66PAM05	M5	4.5	7.0	10.0	1.0	200
WR66PAM06	M6	5.5	9.0	12.5	1.5	200
WR66PAM08	M8	7.0	11.0	16.0	1.5	100



## HOLDING WASHER NYLON HEC SPEC

Part	Size	d	D	h	Pack
WR66POM10	M10	8.4	20.0	0.5	100



# Spacer

## SPACER ROUND NYLON HEC SPEC

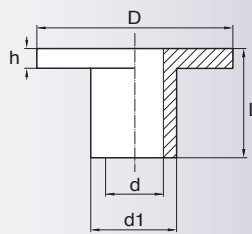
Part	Size	D	h	Pack
SR66P043080130	4.3	8.0	13.0	100
SR66P043080190	4.3	8.0	19.0	100
SR66P043080250	4.3	8.0	25.0	100
SR66P043100130	4.3	10.0	13.0	100
SR66P043100190	4.3	10.0	19.0	100
SR66P043100250	4.3	10.0	25.0	100
SR66P053120130	5.3	12.0	13.0	100
SR66P053120190	5.3	12.0	19.0	100
SR66P053120250	5.3	12.0	25.0	100
SR66P064120130	6.3	12.0	13.0	100
SR66P064120190	6.3	12.0	19.0	100
SR66P064120250	6.3	12.0	25.0	100

# Bushing



## BUSHING NYLON HEC SPEC

Part	Size	d	d1	D	h	L	Pack
WB66PSM05305	M5	5.1	8.0	14.0	1.5	5.0	50
WB66PSM05308	M5	5.1	8.0	14.0	1.5	8.0	50
WB66PSM05313	M5	5.1	8.0	14.0	1.5	13.0	50
WB66PSM05318	M5	5.1	8.0	14.0	1.5	18.0	50
WB66PSM06008	M6	6.0	9.0	16.0	1.5	8.0	50
WB66PSM06013	M6	6.0	9.0	16.0	1.5	13.0	50
WB66PSM06018	M6	6.0	9.0	16.0	1.5	18.0	50
WB66PSM06025	M6	6.0	9.0	16.0	1.5	25.0	50
WB66PSM06035	M6	6.0	9.0	16.0	1.5	35.0	50
WB66PSM08208	M8	8.1	11.0	20.0	2.0	8.0	50
WB66PSM08213	M8	8.1	11.0	20.0	2.0	13.0	50
WB66PSM08218	M8	8.1	11.0	20.0	2.0	18.0	50
WB66PSM08230	M8	8.1	11.0	20.0	2.0	30.0	50
WB66PSM10008	M10	10.0	13.0	23.7	2.0	8.0	50
WB66PSM10013	M10	10.0	13.0	23.7	2.0	13.0	50
WB66PSM10018	M10	10.0	13.0	23.7	2.0	18.0	50
WB66PSM10040	M10	10.0	13.0	23.7	2.0	40.0	50
WB66PSM12308	M12	12.1	14.8	25.6	2.0	8.0	50
WB66PSM12313	M12	12.1	14.8	25.6	2.0	13.0	50
WB66PSM12318	M12	12.1	14.8	25.6	2.0	18.0	50
WB66PSM12325	M12	12.1	14.8	25.6	2.0	25.0	50
WB66PSM12330	M12	12.1	14.8	25.6	2.0	30.0	50
WB66PSM12350	M12	12.1	14.8	25.6	2.0	50.0	50





# Hex Set Screw

## HEX SET SCREW NYLON DIN 933

Part	Size	Length	Pack
BS66PCM030006	M3	6	100
BS66PCM030008	M3	8	100
BS66PCM030010	M3	10	100
BS66PCM030012	M3	12	100
BS66PCM030016	M3	16	100
BS66PCM030020	M3	20	100
BS66PCM030025	M3	25	100
BS66PCM030030	M3	30	100
BS66PCM030035	M3	35	100
BS66PCM030040	M3	40	100
BS66PCM040006	M4	6	100
BS66PCM040008	M4	8	100
BS66PCM040010	M4	10	100
BS66PCM040012	M4	12	100
BS66PCM040016	M4	16	100
BS66PCM040020	M4	20	100
BS66PCM040025	M4	25	100
BS66PCM040030	M4	30	100
BS66PCM040035	M4	35	100
BS66PCM040040	M4	40	100
BS66PCM050006	M5	6	100
BS66PCM050008	M5	8	100
BS66PCM050010	M5	10	100
BS66PCM050012	M5	12	100
BS66PCM050016	M5	16	100
BS66PCM050020	M5	20	100
BS66PCM050025	M5	25	100
BS66PCM050030	M5	30	100
BS66PCM050035	M5	35	100
BS66PCM050040	M5	40	100
BS66PCM050045	M5	45	100
BS66PCM050050	M5	50	100

# Hex Set Screw



## HEX SET SCREW

NYLON DIN933

Part	Size	Length	Pack
BS66PCM060006	M6	6	100
BS66PCM060010	M6	10	100
BS66PCM060012	M6	12	100
BS66PCM060016	M6	16	100
BS66PCM060020	M6	20	100
BS66PCM060025	M6	25	100
BS66PCM060030	M6	30	100
BS66PCM060035	M6	35	100
BS66PCM060040	M6	40	100
BS66PCM060045	M6	45	100
BS66PCM060050	M6	50	50
BS66PCM060060	M6	60	50
BS66PCM080010	M8	10	50
BS66PCM080012	M8	12	50
BS66PCM080016	M8	16	50
BS66PCM080020	M8	20	50
BS66PCM080025	M8	25	50
BS66PCM080030	M8	30	50
BS66PCM080035	M8	35	50
BS66PCM080040	M8	40	50
BS66PCM080045	M8	45	50
BS66PCM080050	M8	50	50
BS66PCM080060	M8	60	25
BS66PCM080070	M8	70	25
BS66PCM080075	M8	75	25
BS66PCM080080	M8	80	25
BS66PCM080100	M8	100	25
BS66PCM100016	M10	16	25
BS66PCM100020	M10	20	25
BS66PCM100025	M10	25	25
BS66PCM100030	M10	30	25
BS66PCM100035	M10	35	25
BS66PCM100040	M10	40	25
BS66PCM100045	M10	45	25
BS66PCM100050	M10	50	25
BS66PCM100060	M10	60	25
BS66PCM100070	M10	70	25
BS66PCM100080	M10	80	25
BS66PCM100090	M10	90	25
BS66PCM100100	M10	100	25





# Hex Set Screw

## HEX SET SCREW

NYLON DIN933

Part	Size	Length	Pack
BS66PCM120030	M12	30	20
BS66PCM120035	M12	35	20
BS66PCM120040	M12	40	20
BS66PCM120045	M12	45	20
BS66PCM120050	M12	50	20
BS66PCM120060	M12	60	20
BS66PCM120070	M12	70	20
BS66PCM120075	M12	75	20
BS66PCM120090	M12	90	20
BS66PCM120100	M12	100	20
BS66PCM160025	M16	25	5
BS66PCM160030	M16	30	5
BS66PCM160035	M16	35	5
BS66PCM160040	M16	40	5
BS66PCM160045	M16	45	5
BS66PCM160050	M16	50	5
BS66PCM160060	M16	60	5
BS66PCM160065	M16	65	5
BS66PCM160070	M16	70	5
BS66PCM160075	M16	75	5
BS66PCM200050	M20	50	5
BS66PCM200060	M20	60	5
BS66PCM200065	M20	65	5
BS66PCM200075	M20	75	5
BS66PCM240050	M24	50	5
BS66PCM240060	M24	60	5

# Socket Head Cap Screw



## SOCKET HEAD CAP SCREW NYLON DIN912

Part	Size	Length	Pack
SH66PCM030006	M3	6	100
SH66PCM030008	M3	8	100
SH66PCM030010	M3	10	100
SH66PCM030012	M3	12	100
SH66PCM030016	M3	16	100
SH66PCM030020	M3	20	100
SH66PCM030025	M3	25	100
SH66PCM030030	M3	30	100
SH66PCM030035	M3	35	100
SH66PCM030040	M3	40	100
SH66PCM040006	M4	6	100
SH66PCM040008	M4	8	100
SH66PCM040010	M4	10	100
SH66PCM040012	M4	12	100
SH66PCM040016	M4	16	100
SH66PCM040020	M4	20	100
SH66PCM040025	M4	25	100
SH66PCM040030	M4	30	100
SH66PCM040035	M4	35	100
SH66PCM040040	M4	40	100
SH66PCM050010	M5	10	100
SH66PCM050012	M5	12	100
SH66PCM050016	M5	16	100
SH66PCM050020	M5	20	100
SH66PCM050025	M5	25	100
SH66PCM050030	M5	30	100
SH66PCM050035	M5	35	100
SH66PCM050040	M5	40	100
SH66PCM050045	M5	45	100
SH66PCM050050	M5	50	100
SH66PCM060010	M6	10	100
SH66PCM060012	M6	12	100
SH66PCM060016	M6	16	100
SH66PCM060020	M6	20	100
SH66PCM060025	M6	25	100
SH66PCM060030	M6	30	100
SH66PCM060035	M6	35	100
SH66PCM060040	M6	40	100
SH66PCM060045	M6	45	100
SH66PCM060050	M6	50	100
SH66PCM060060	M6	60	100





# Socket Head Cap Screw

## SOCKET HEAD CAP SCREW NYLON DIN912

Part	Size	Length	Pack
SH66PCM080016	M8	16	100
SH66PCM080020	M8	20	50
SH66PCM080025	M8	25	50
SH66PCM080030	M8	30	50
SH66PCM080035	M8	35	50
SH66PCM080040	M8	40	50
SH66PCM080045	M8	45	50
SH66PCM080050	M8	50	50
SH66PCM080055	M8	55	50
SH66PCM080060	M8	60	50
SH66PCM080070	M8	70	50
SH66PCM080100	M8	100	50
SH66PCM100016	M10	16	50
SH66PCM100020	M10	20	50
SH66PCM100025	M10	25	50
SH66PCM100030	M10	30	50
SH66PCM100035	M10	35	50
SH66PCM100040	M10	40	50
SH66PCM100045	M10	45	50
SH66PCM100050	M10	50	50
SH66PCM100060	M10	60	50
SH66PCM100070	M10	70	50
SH66PCM100080	M10	80	50
SH66PCM100090	M10	90	50
SH66PCM100100	M10	100	25
SH66PCM120020	M12	20	25
SH66PCM120025	M12	25	25
SH66PCM120030	M12	30	25
SH66PCM120035	M12	35	25
SH66PCM120040	M12	40	25
SH66PCM120045	M12	45	25
SH66PCM120050	M12	50	25

# Socket Grub Screw

## HEX SOCKET GRUB SCREW NYLON DIN913

Part	Size	Length	Pack
SG66PCM050006	M5	6	100
SG66PCM050008	M5	8	100
SG66PCM050010	M5	10	100
SG66PCM050012	M5	12	100
SG66PCM060006	M6	6	100
SG66PCM060010	M6	10	100
SG66PCM060012	M6	12	100
SG66PCM080010	M8	10	100
SG66PCM080016	M8	16	100
SG66PCM080040	M8	40	100
SG66PCM100025	M10	25	50





# Slotted Grub Screw

## SLOTTED GRUB SCREW NYLON DIN551

Part	Size	Length	Pack
SG66PSM030008	M3	8	100
SG66PSM030010	M3	10	100
SG66PSM030012	M3	12	100
SG66PSM030016	M3	16	100
SG66PSM030020	M3	20	100
SG66PSM030025	M3	25	100
SG66PSM030030	M3	30	100
SG66PSM040006	M4	6	100
SG66PSM040008	M4	8	100
SG66PSM040010	M4	10	100
SG66PSM040012	M4	12	100
SG66PSM040016	M4	16	100
SG66PSM040020	M4	20	100
SG66PSM040025	M4	25	100
SG66PSM040030	M4	30	100
SG66PSM040040	M4	40	100
SG66PSM050006	M5	6	100
SG66PSM050008	M5	8	100
SG66PSM050010	M5	10	100
SG66PSM050012	M5	12	100
SG66PSM050016	M5	16	100
SG66PSM050020	M5	20	100
SG66PSM050025	M5	25	100
SG66PSM050030	M5	30	100
SG66PSM050035	M5	35	100
SG66PSM050040	M5	40	100
SG66PSM050050	M5	50	100

# Slotted Grub Screw



## SLOTTED GRUB SCREW NYLON DIN551

Part	Size	Length	Pack
SG66PSM060006	M6	6	100
SG66PSM060008	M6	8	100
SG66PSM060010	M6	10	100
SG66PSM060012	M6	12	100
SG66PSM060016	M6	16	100
SG66PSM060020	M6	20	100
SG66PSM060025	M6	25	100
SG66PSM060030	M6	30	100
SG66PSM060035	M6	35	100
SG66PSM060040	M6	40	100
SG66PSM060045	M6	45	100
SG66PSM060050	M6	50	100
SG66PSM060060	M6	60	100
SG66PSM060070	M6	70	100
SG66PSM080010	M8	10	100
SG66PSM080012	M8	12	100
SG66PSM080016	M8	16	100
SG66PSM080020	M8	20	100
SG66PSM080025	M8	25	100
SG66PSM080030	M8	30	100
SG66PSM080035	M8	35	100
SG66PSM080040	M8	40	100
SG66PSM080045	M8	45	100
SG66PSM080050	M8	50	100
SG66PSM080060	M8	60	100
SG66PSM080070	M8	70	50
SG66PSM100025	M10	25	50
SG66PSM100030	M10	30	50
SG66PSM100035	M10	35	50
SG66PSM100040	M10	40	50
SG66PSM100045	M10	45	50
SG66PSM100050	M10	50	50





# Countersunk Head Slot Screw

## COUNTERSUNK HEAD SLOT SCREW NYLON DIN963

Part	Size	Length	Pack
MS66CSM030006	M3	6	100
MS66CSM030008	M3	8	100
MS66CSM030010	M3	10	100
MS66CSM030012	M3	12	100
MS66CSM030016	M3	16	100
MS66CSM030020	M3	20	100
MS66CSM030025	M3	25	100
MS66CSM030030	M3	30	100
MS66CSM040006	M4	6	100
MS66CSM040008	M4	8	100
MS66CSM040010	M4	10	100
MS66CSM040012	M4	12	100
MS66CSM040016	M4	16	100
MS66CSM040020	M4	20	100
MS66CSM040025	M4	25	100
MS66CSM040030	M4	30	100
MS66CSM040040	M4	40	100
MS66CSM050010	M5	10	100
MS66CSM050012	M5	12	100
MS66CSM050016	M5	16	100
MS66CSM050020	M5	20	100
MS66CSM050025	M5	25	100
MS66CSM050030	M5	30	100
MS66CSM050035	M5	35	100
MS66CSM050040	M5	40	100
MS66CSM050045	M5	45	100
MS66CSM050050	M5	50	100
MS66CSM050065	M5	65	100

# Countersunk Head Slot Screw



## COUNTERSUNK HEAD SLOT SCREW NYLON DIN963

Part	Size	Length	Pack
MS66CSM060010	M6	10	100
MS66CSM060012	M6	12	100
MS66CSM060015	M6	15	100
MS66CSM060020	M6	20	100
MS66CSM060025	M6	25	100
MS66CSM060030	M6	30	100
MS66CSM060035	M6	35	100
MS66CSM060040	M6	40	100
MS66CSM060045	M6	45	100
MS66CSM060050	M6	50	100
MS66CSM060065	M6	65	100
MS66CSM080010	M8	10	100
MS66CSM080012	M8	12	100
MS66CSM080015	M8	15	100
MS66CSM080020	M8	20	100
MS66CSM080025	M8	25	100
MS66CSM080030	M8	30	100
MS66CSM080035	M8	35	100
MS66CSM080040	M8	40	50
MS66CSM080045	M8	45	50
MS66CSM080050	M8	50	50
MS66CSM080065	M8	65	50
MS66CSM100025	M10	25	50
MS66CSM100030	M10	30	50
MS66CSM100035	M10	35	50
MS66CSM100040	M10	40	50
MS66CSM100045	M10	45	50
MS66CSM100050	M10	50	50
MS66CSM120065	M12	65	25





# Cheese Head Slot Screw

## CHEESE HEAD SLOT SCREW NYLON DIN84

Part	Size	Length	Pack
MS66ESM0250005	M2.5	5	100
MS66ESM0250008	M2.5	8	100
MS66ESM0250010	M2.5	10	100
MS66ESM0250012	M2.5	12	100
MS66ESM0250016	M2.5	16	100
MS66ESM0250020	M2.5	20	100
MS66ESM0250025	M2.5	25	100
MS66ESM030006	M3	6	100
MS66ESM030008	M3	8	100
MS66ESM030010	M3	10	100
MS66ESM030012	M3	12	100
MS66ESM030016	M3	16	100
MS66ESM030020	M3	20	100
MS66ESM030025	M3	25	100
MS66ESM030035	M3	35	100
MS66ESM040006	M4	6	100
MS66ESM040008	M4	8	100
MS66ESM040010	M4	10	100
MS66ESM040012	M4	12	100
MS66ESM040016	M4	16	100
MS66ESM040020	M4	20	100
MS66ESM040025	M4	25	100
MS66ESM040030	M4	30	100
MS66ESM040040	M4	40	100
MS66ESM040050	M4	50	100
MS66ESM050010	M5	10	100
MS66ESM050012	M5	12	100
MS66ESM050016	M5	16	100
MS66ESM050020	M5	20	100
MS66ESM050025	M5	25	100
MS66ESM050030	M5	30	100
MS66ESM050040	M5	40	100
MS66ESM050050	M5	50	50
MS66ESM050060	M5	60	50
MS66ESM050070	M5	70	50

# Cheese Head Slot Screw



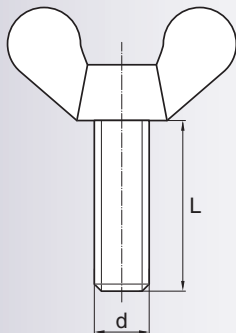
## CHEESE HEAD SLOT SCREW NYLON DIN84

Part	Size	Length	Pack
MS66ESM060010	M6	10	100
MS66ESM060012	M6	12	100
MS66ESM060016	M6	16	100
MS66ESM060020	M6	20	100
MS66ESM060025	M6	25	50
MS66ESM060030	M6	30	50
MS66ESM060035	M6	35	50
MS66ESM060040	M6	40	50
MS66ESM060050	M6	50	50
MS66ESM060060	M6	60	50
MS66ESM060070	M6	70	50
MS66ESM080016	M8	16	50
MS66ESM080020	M8	20	50
MS66ESM080025	M8	25	50
MS66ESM080030	M8	30	50
MS66ESM080035	M8	35	50
MS66ESM080040	M8	40	50
MS66ESM080050	M8	50	25
MS66ESM080060	M8	60	25
MS66ESM080070	M8	70	25
MS66ESM080080	M8	80	25
MS66ESM100030	M10	30	25
MS66ESM100035	M10	35	25

## BINDER HEAD PHILLIPS SCREW NYLON DIN7985

Part	Size	Length	Pack
MS66BPM050040	M5	40	100





# Wing Screw

## WING SCREW NYLON DIN316

Part	Size	L	Pack
MS66PWM050010	M5	10	100
MS66PWM050016	M5	16	100
MS66PWM050020	M5	20	100
MS66PWM050025	M5	25	100
MS66PWM060010	M6	10	50
MS66PWM060016	M6	16	50
MS66PWM060020	M6	20	50
MS66PWM060025	M6	25	50
MS66PWM060030	M6	30	50

# Terms and Conditions



The Company and the Customer each agree with the other as follows:

## DEFINITIONS

Company means Hobson Engineering Pty Limited (A.B.N. 38 000 289 958).

Customer means the party described as the customer in the Delivery Docket as amended by the Invoice.

Delivery Docket means the document furnished by the Company to the Customer.

GST has the same meaning as given in A New Tax System (Goods and Services Tax) Act 1999 ("Act").

Invoice means a tax invoice (as defined in the Act) furnished by the Company to the Customer in respect of the product.

Product means the goods described as the product in the Delivery Docket as amended by the Invoice.

Purchase Order means the request by the Customer for the Product which is accepted by the Company.

Sum means the price and other monies payable for the Product together with GST payable on the supply of the Product.

## SUPPLY

The Company supplies to the Customer the Product in accordance with these terms and conditions as varied in writing by the Company. Any variation in writing by the Company shall take precedence to these terms and conditions. We reserve the right to supply 316 stainless steel in lieu of 304 stainless steel.

## PRICE

The Sum is set forth in the Purchase Order as amended by the Invoice. The Customer agrees that the Sum set forth in the Purchase Order may be amended by the Invoice in respect of the following:

arithmetic error; and

GST payable on the supply of the Product not included or incorrectly calculated in the Sum.

In addition to the price the Customer agrees, if so requested by the Company, to pay:

any increase in any GST taxes and duties which the Company may be required to collect or pay in respect of the Product after the date of the Delivery Docket; and

interest accruing on a daily basis on the unpaid balance of the Sum from the due date for payment until actual receipt at the rate of 1 per cent per month.

## PAYMENT

The Customer must pay the Sum within 30 days of the end of the month in which the Product is delivered to the Customer unless otherwise determined by the Company.

## TITLE AND RISK

Notwithstanding any other term and condition, the parties agree that the risk of the Product passes on delivery, but title to the Product does not pass until the Sum is paid in full. Until such time as the Sum is paid in full the Customer is only at liberty to sell the Product in the ordinary course of its business as agent for the Company on the condition that it holds on trust and accounts to the Company for the proceeds thereof. Pending the passing of title to the Product the Company may require the Customer to mark the Product as being the property of the Company.

## ACCEPTANCE

The initialling or signing of the Delivery Docket by the Customer or representative of the Customer shall constitute acceptance of the Product in accord with these terms and conditions.

## RETURNS AND ALLOWANCES

The Customer must satisfy itself within 14 days of the date of delivery of the Product with the type and quantity of the Product. In the event that the Customer considers it has not received the appropriate type and or quantity of Product it must notify the Company in writing within 14 days of the date of delivery of the Product. The notice must refer to the Delivery Docket number, the delivery date, the invoice number (if applicable) and provide adequate details of the incorrect type and or quantity of Product.

As a consequence of this condition the receipt of Products by the Company, returned by the Customer does not constitute acceptance of the Product. Acceptance by the Company shall only be given by the Company, in writing, after the Product has been inspected and found satisfactory in the opinion of the Company. In the event that the Company does not accept the Product the Customer will be notified and the Product made available to the Customer. As a consequence of this condition no transport or freight costs shall be borne by the Company unless agreed to in writing by the Company.

## EXCLUSION OF WARRANTY

Nothing in this agreement excludes, restricts or modifies any condition, warranty or liability which may at any time be implied by the Trade Practices Act or Sales of Goods Act (NSW) or equivalent State or Territory legislation or any other law where to do so is illegal or would render any provision of this agreement void.

Where the Company is responsible pursuant to the aforesaid condition warranty or liability which can not be excluded the parties agree that the Company shall only be liable for the cost of repair or the resupply of the Product. Subject to this condition any express or implied condition, statement or warranty (statutory or otherwise) in respect of the Product is expressly negated and excluded.

## GENERAL

The validity, interpretation and performance of this agreement will be governed by and construed in accordance with the law of the State of New South Wales and of the Commonwealth of Australia which the parties acknowledge is the proper law of this agreement. Each of the parties irrevocably agrees that the Courts of the State of New South Wales and of the Commonwealth of Australia will have jurisdiction to hear and determine any suit, action or proceedings, and to settle any dispute, which may arise out of or in connection with this agreement and for this purpose irrevocably submits to the jurisdiction of such Courts.

DISCOUNTS as advised are applicable to the prices shown in this price list.

PRICES The resale prices or discounts referred to in the price list are recommended only and there is no obligation to comply with the recommendation. Prices are subject to GST where applicable.

Minimum invoice value is \$40.00

SHIPPING QUANTITIES On specially manufactured items ( $\pm 10\%$ ).

VALIDITY ON SPECIAL QUOTATIONS 14 days unless otherwise stated.

© Copyright 2005 – No part of this catalogue may be published without the written consent of the publishers.

Note: Due to research and development, products are continually improved. This may lead to the specifications being changed without notice.

As part of our ongoing commitment to serve your fastener needs, please let us know if there are any products which we lack.

Also, if you've got any comments on this year's Catalogue, let us know. We'll consider your feedback when we produce next year's. This catalogue is for you to use – so if it's use can be made easier, then make sure you tell us! Our aim is to have the best catalogue possible as well as the best products.