



HOBSON

HIGH-TENSILE

MULTI-FIX_{WA}



CLICK ON LOGO FOR WHERE TO BUY



High Tensile Stock List **2015**



HIGH-TENSILE

Purlin Assembly / Class 8 Nuts

Hot Dip Galvanise
Zinc Yellow Passivate
Plain



PURLIN HEX BOLT, NUT & 2 WASHER KIT CLASS 8.8 / CLASS 8 HOBSON STANDARD (ASSEMBLED)

**NEW!
PRODUCT**

Part	Size	Length (mm)	Pack	Pack Wgt (Kg)	Pallet	Stock Z/P
KBHHTZCM160030	M16	30	100	14.10	4,800	✓
KBHHTZCM160040	M16	40	100	15.80	4,800	✓



FASCIA HEX BOLT & NUT KIT CLASS 8.8 / CLASS 8 HOBSON STANDARD (ASSEMBLED)

**NEW!
PRODUCT**

Part	Size	Length (mm)	Pack	Pack Wgt (Kg)	Pallet	Stock HDG
KBAHTGCM100025	M10	25	200	7.37	16,000	✓
KBAHTGCM120030	M12	30	150	9.00	12,000	✓



PURLIN HEX FLANGE BOLT & NUT KIT CLASS 8.8 / CLASS 8 HOBSON STANDARD (ASSEMBLED)

**NEW!
PRODUCT**

Part	Size	Length (mm)	Pack	Pack Wgt (Kg)	Pallet	Stock Z/P
KBFHTZCM120030	M12	30	150	10.92	7,200	✓



METRIC HEX NUT CLASS 8 AS1112.1

Part	Size	Carton	Pack	Pack Wgt (Kg)	HDG	Stock Z/P	PLN
NH08ZCM04	M4	12000	1000	1.25		✓	
NH08ZCM05	M5	12000	1000	1.50		✓	
NH08?CM06	M6	6000	1000	2.00	✓	✓	
NH08?CM08	M8	3000	500	2.50	✓	✓	
NH08?CM10	M10	1200	200	1.85	✓	✓	
NH08?CM12	M12	1200	200	3.09	✓	✓	
NH08ZCM14	M14	100	25	0.58		✓	
NH08?CM16	M16	200	200	7.00	✓	✓	✓
NH08ZCM18	M18	100	25	1.20		✓	
NH08ZCM20	M20	100	100	6.70		✓	
NH08?CM24	M24	100	100	11.28		✓	✓



METRIC HEX LOCK NUT CLASS 8 AS1112.4

Part	Size	Pack	Pack Wgt (Kg)	Stock HDG
NL08GCM12	M12	100	0.93	✓
NL08GCM16	M16	100	2.14	✓

? = G: Hot Dip Galvanise (HDG) Z: Zinc Plate (Z/P) Y: Zinc Yellow Passivate (ZYP) P: Plain (PLN)

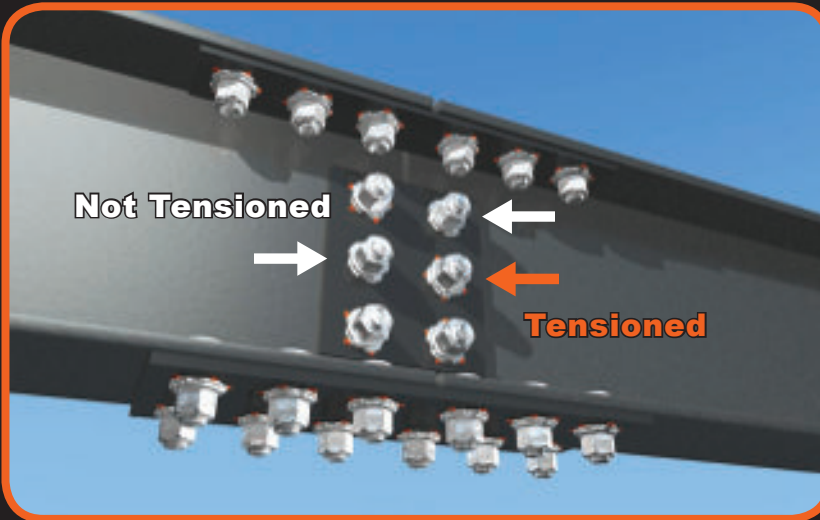
orange is good



Squirter® DTIs (Direct Tension Indicator)
Designed for AS1252 Structural Bolting.

Features

- ✓ Manufactured to ASTM F959M.
- ✓ Conforms to AS4100-1990 15.4.1 (b) Direct-tensioning indication device.
- ✓ Lot trace number on each washer.
- ✓ Test Certificates available online www.hobson.com.au.
- ✓ Visual tension indication by Orange Silicone.
- ✓ Enables efficient & accurate installation of AS1252 structural assemblies.



SQUIRTER® DTIs (Direct Tension Indicator) are DTIs with a flexible silicone embedded in the depressions under the bumps. To use them, simply ... Tighten the bolt until the calibrated amount of orange silicone appears from under the DTIs squirt locations, then stop tightening. That's all there is to it.

Now you can see when the bolt assembly is tensioned correctly.



Easier & Better than Turn-of Nut

You don't have to remember to stop turning at 1/3rd, 1/2, or 2/3rds turn. No match marking necessary.

Saves Time

Enables correct tensioning as fast as the wrench can be moved to the next bolt, because the operator can see when to stop.

Safe for Inspectors

Once calibrated, inspectors can easily see the orange squirts, they don't have to climb to all the connections or carry around a torque wrench to know the connection has been completed. And instead of sampling only some of the DTIs with a feeler gage, squirter allow virtually 100% inspection.

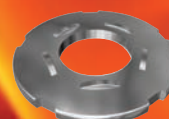
Since 1935

... because quality matters

SQUIRTER® DTIs

the best way to bolt!

www.hobson.com.au





AS1252 Structural

Hot Dip Galvanise



STRUCTURAL ASSEMBLIES AS1252 (1983 DIMENSIONS & 1996 MECHANICAL PROPERTIES)

Part	Size	Length	Thread	Pack	Pack Wgt	Stock
		(mm)	(mm)		(Kg)	HDG
KBHSTGCM120030	M12	30	20	200	13.52	✓
KBHSTGCM120035	M12	35	25	200	14.52	✓
KBHSTGCM120040	M12	40	30	150	15.32	✓
KBHSTGCM120045	M12	45	30	150	12.24	✓
KBHSTGCM120050	M12	50	30	150	12.84	✓
KBHSTGCM120060	M12	60	30	150	13.89	✓
KBHSTGCM120065	M12	65	30	150	13.92	✓
KBHSTGCM120070	M12	70	30	150	13.95	✓
KBHSTGCM120075	M12	75	30	150	13.99	✓
KBHSTGCM120080	M12	80	30	150	14.01	✓
KBHSTGCM120090	M12	90	30	100	13.89	✓
KBHSTGCM120100	M12	100	30	100	14.25	✓
KBHSTGCM120120	M12	120	36	75	12.82	✓
KBHSTGCM120150	M12	150	36	75	15.02	✓
KBHSTGCM120180	M12	180	36	50	12.02	✓
KBHSTGCM120200	M12	200	36	50	13.05	✓

? = G: Hot Dip Galvanise (HDG) Z: Zinc Plate (Z/P) Y: Zinc Yellow Passivate (ZYP) P: Plain (PLN)

AS1252 Structural

Hot Dip Galvanise



STRUCTURAL ASSEMBLIES AS1252 (1983 DIMENSIONS & 1996 MECHANICAL PROPERTIES)

Part	Size	Length	Thread	Pack	Pack Wgt	Stock
		(mm)	(mm)		(Kg)	HDG
KBHSTGCM160040	M16	40	26	100	18.45	✓
KBHSTGCM160045	M16	45	31	100	19.00	✓
KBHSTGCM160050	M16	50	36	100	19.00	✓
KBHSTGCM160055	M16	55	38	100	20.00	✓
KBHSTGCM160060	M16	60	38	100	21.45	✓
KBHSTGCM160065	M16	65	38	75	15.75	✓
KBHSTGCM160070	M16	70	38	75	16.50	✓
KBHSTGCM160075	M16	75	38	75	17.25	✓
KBHSTGCM160080	M16	80	38	75	18.00	✓
KBHSTGCM160090	M16	90	38	75	19.50	✓
KBHSTGCM160100	M16	100	38	75	20.25	✓
KBHSTGCM160110	M16	110	38	50	14.85	✓
KBHSTGCM160120	M16	120	38	50	16.20	✓
KBHSTGCM160130	M16	130	44	50	16.33	✓
KBHSTGCM160140	M16	140	44	50	17.01	✓
KBHSTGCM160150	M16	150	44	50	17.85	✓
KBHSTGCM160160	M16	160	44	50	18.08	✓
KBHSTGCM160170	M16	170	44	50	19.14	✓
KBHSTGCM160180	M16	180	44	35	19.68	✓
KBHSTGCM160190	M16	190	44	35	13.55	✓
KBHSTGCM160200	M16	200	44	35	14.56	✓
KBHSTGCM160220	M16	220	57	35	15.61	✓
KBHSTGCM160240	M16	240	100	35	16.24	✓
KBHSTGCM160250	M16	250	100	35	16.80	✓
KBHSTGCM160270	M16	270	100	35	17.85	✓
KBHSTGCM160300	M16	300	100	25	13.63	✓
KBHSTGCM160350	M16	350	120	1	0.66	✓
KBHSTGCM160400	M16	400	120	1	0.75	✓
KBHSTGCM160500	M16	500	120	1	0.94	✓
KBHSTGCM160600	M16	600	120	1	1.13	✓



? = G: Hot Dip Galvanise (HDG) Z: Zinc Plate (Z/P) Y: Zinc Yellow Passivate (ZYP) P: Plain (PLN)





HIGH-TENSILE

AS1252 Structural

Hot Dip Galvanise



STRUCTURAL ASSEMBLIES AS1252 (1983 DIMENSIONS & 1996 MECHANICAL PROPERTIES)

Part	Size	Length	Thread	Pack	Pack Wgt	Stock
		(mm)	(mm)		(Kg)	HDG
KBHSTGCM200040	M20	40	23	75	21.75	✓
KBHSTGCM200045	M20	45	28	75	22.50	✓
KBHSTGCM200050	M20	50	33	50	16.00	✓
KBHSTGCM200055	M20	55	38	50	16.08	✓
KBHSTGCM200060	M20	60	43	50	16.50	✓
KBHSTGCM200065	M20	65	46	50	17.50	✓
KBHSTGCM200070	M20	70	46	50	18.00	✓
KBHSTGCM200075	M20	75	46	50	18.50	✓
KBHSTGCM200080	M20	80	46	50	19.00	✓
KBHSTGCM200085	M20	85	46	50	20.00	✓
KBHSTGCM200090	M20	90	46	40	15.77	✓
KBHSTGCM200100	M20	100	46	40	18.05	✓
KBHSTGCM200110	M20	110	46	40	18.80	✓
KBHSTGCM200120	M20	120	46	30	14.70	✓
KBHSTGCM200130	M20	130	52	30	15.00	✓
KBHSTGCM200140	M20	140	52	30	16.20	✓
KBHSTGCM200150	M20	150	52	30	16.20	✓
KBHSTGCM200160	M20	160	52	30	17.25	✓
KBHSTGCM200180	M20	180	52	25	15.63	✓
KBHSTGCM200190	M20	190	52	25	15.68	✓
KBHSTGCM200200	M20	200	52	25	16.30	✓
KBHSTGCM200210	M20	210	65	25	16.88	✓
KBHSTGCM200220	M20	220	65	25	17.45	✓
KBHSTGCM200240	M20	240	65	20	14.92	✓
KBHSTGCM200250	M20	250	100	20	15.32	✓
KBHSTGCM200275	M20	275	100	20	16.52	✓
KBHSTGCM200300	M20	300	100	15	13.11	✓
KBHSTGCM200350	M20	350	120	1	1.05	✓
KBHSTGCM200400	M20	400	120	1	1.15	✓
KBHSTGCM200500	M20	500	120	1	1.44	✓
KBHSTGCM200600	M20	600	120	1	1.74	✓

? = G: Hot Dip Galvanise (HDG) Z: Zinc Plate (Z/P) Y: Zinc Yellow Passivate (ZYP) P: Plain (PLN)

AS1252 Structural

Hot Dip Galvanise



STRUCTURAL ASSEMBLIES AS1252 (1983 DIMENSIONS & 1996 MECHANICAL PROPERTIES)

Part	Size	Length	Thread	Pack	Pack Wgt	Stock
		(mm)	(mm)		(Kg)	HDG
KBHSTGCM240050	M24	50	29	30	17.10	✓
KBHSTGCM240055	M24	55	34	30	17.70	✓
KBHSTGCM240060	M24	60	39	30	18.00	✓
KBHSTGCM240065	M24	65	44	30	18.60	✓
KBHSTGCM240070	M24	70	49	30	18.90	✓
KBHSTGCM240075	M24	75	54	30	19.50	✓
KBHSTGCM240080	M24	80	54	30	19.80	✓
KBHSTGCM240085	M24	85	54	30	20.00	✓
KBHSTGCM240090	M24	90	54	25	17.50	✓
KBHSTGCM240100	M24	100	54	25	18.10	✓
KBHSTGCM240110	M24	110	54	20	15.40	✓
KBHSTGCM240120	M24	120	54	20	16.20	✓
KBHSTGCM240130	M24	130	60	20	16.80	✓
KBHSTGCM240140	M24	140	60	20	17.60	✓
KBHSTGCM240150	M24	150	60	20	18.20	✓
KBHSTGCM240160	M24	160	60	20	18.50	✓
KBHSTGCM240170	M24	170	60	20	19.60	✓
KBHSTGCM240180	M24	180	60	15	14.90	✓
KBHSTGCM240200	M24	200	60	15	15.63	✓
KBHSTGCM240210	M24	210	73	15	16.35	✓
KBHSTGCM240220	M24	220	73	15	17.18	✓
KBHSTGCM240230	M24	230	73	15	17.96	✓
KBHSTGCM240250	M24	250	73	15	19.52	✓
KBHSTGCM240260	M24	260	120	15	19.92	✓
KBHSTGCM240280	M24	280	120	15	20.75	✓
KBHSTGCM240300	M24	300	120	10	13.70	✓
KBHSTGCM240330	M24	330	120	1	1.45	✓
KBHSTGCM240350	M24	350	120	1	1.53	✓
KBHSTGCM240390	M24	390	120	1	1.69	✓
KBHSTGCM240400	M24	400	120	1	1.77	✓
KBHSTGCM240415	M24	415	120	1	1.82	✓
KBHSTGCM240450	M24	450	120	1	1.95	✓
KBHSTGCM240500	M24	500	120	1	2.18	✓
KBHSTGCM240550	M24	550	120	1	2.50	✓
KBHSTGCM240600	M24	600	120	1	2.72	✓



? = G: Hot Dip Galvanise (HDG) Z: Zinc Plate (Z/P) Y: Zinc Yellow Passivate (ZYP) P: Plain (PLN)





HIGH-TENSILE



AS1252 Structural

Hot Dip Galvanise

STRUCTURAL ASSEMBLIES

AS1252 (1983 DIMENSIONS & 1996 MECHANICAL PROPERTIES)

Part	Size	Length	Thread	Pack	Pack Wgt (Kg)	Stock HDG
		(mm)	(mm)			
KBHSTGCM300075	M30	75	50	15	17.40	✓
KBHSTGCM300080	M30	80	55	15	17.40	✓
KBHSTGCM300085	M30	85	60	15	18.00	✓
KBHSTGCM300090	M30	90	65	15	18.45	✓
KBHSTGCM300100	M30	100	66	15	19.20	✓
KBHSTGCM300110	M30	110	66	10	12.59	✓
KBHSTGCM300120	M30	120	66	10	13.09	✓
KBHSTGCM300130	M30	130	72	10	14.60	✓
KBHSTGCM300140	M30	140	72	10	14.90	✓
KBHSTGCM300150	M30	150	72	10	15.40	✓
KBHSTGCM300160	M30	160	72	10	15.90	✓
KBHSTGCM300170	M30	170	72	10	16.40	✓
KBHSTGCM300180	M30	180	72	8	13.60	✓
KBHSTGCM300190	M30	190	72	8	14.08	✓
KBHSTGCM300200	M30	200	72	8	14.56	✓
KBHSTGCM300220	M30	220	85	8	14.56	✓
KBHSTGCM300260	M30	260	85	8	16.42	✓
KBHSTGCM300280	M30	280	100	8	18.00	✓
KBHSTGCM300300	M30	300	100	1	1.82	✓
KBHSTGCM300350	M30	350	120	1	2.12	✓
KBHSTGCM300400	M30	400	120	1	2.42	✓
KBHSTGCM300500	M30	500	120	1	3.03	✓

? = G: Hot Dip Galvanise (HDG) Z: Zinc Plate (Z/P) Y: Zinc Yellow Passivate (ZYP) P: Plain (PLN)

AS1252 Structural

Hot Dip Galvanise



STRUCTURAL ASSEMBLIES

AS1252 (1983 DIMENSIONS & 1996 MECHANICAL PROPERTIES)

Part	Size	Length	Thread	Pack	Pack Wgt	Stock
		(mm)	(mm)		(Kg)	HDG
KBHSTGCM360090	M36	90	60	8	16.40	✓
KBHSTGCM360100	M36	100	70	8	16.88	✓
KBHSTGCM360120	M36	120	78	8	18.37	✓
KBHSTGCM360130	M36	130	84	8	17.92	✓
KBHSTGCM360140	M36	140	84	8	18.56	✓
KBHSTGCM360150	M36	150	84	8	19.16	✓
KBHSTGCM360160	M36	160	84	5	12.35	✓
KBHSTGCM360170	M36	170	84	5	12.75	✓
KBHSTGCM360180	M36	180	84	5	13.15	✓
KBHSTGCM360190	M36	190	84	5	13.35	✓
KBHSTGCM360200	M36	200	84	5	13.60	✓
KBHSTGCM360220	M36	220	97	1	2.71	✓
KBHSTGCM360240	M36	240	97	1	2.96	✓
KBHSTGCM360260	M36	260	97	1	3.20	✓
KBHSTGCM360280	M36	280	100	1	3.44	✓
KBHSTGCM360300	M36	300	100	1	3.69	✓
KBHSTGCM360400	M36	400	120	1	4.92	✓
KBHSTGCM360500	M36	500	120	1	6.15	✓



? = G: Hot Dip Galvanise (HDG) Z: Zinc Plate (Z/P) Y: Zinc Yellow Passivate (ZYP) P: Plain (PLN)





HIGH-TENSILE



Hex Set Screw Class 8.8

Zinc Plate

HEX SET SCREW Class 8.8 AS1110.2

Part	Size	Length (mm)	Pack	BO Wgt (Kg)	Blk Kit	ZP Set	ZP Kit
BS88ZCM050012	M5	12	200	0.58		✓	
BS88ZCM050016	M5	16	200	0.68		✓	
BS88ZCM050020	M5	20	200	0.78		✓	
BS88ZCM050025	M5	25	200	0.97		✓	
BS88ZCM050030	M5	30	200	1.13		✓	
BS88ZCM050035	M5	35	200	1.28		✓	
BS88ZCM050040	M5	40	200	1.44		✓	
BS88ZCM060012	M6	12	200	0.95		✓	
BS88ZCM060016	M6	16	200	1.00	*	✓	*
BS88ZCM060020	M6	20	200	1.20	*	✓	*
BS88ZCM060025	M6	25	200	1.40	*	✓	*
BS88ZCM060030	M6	30	200	1.60		✓	
BS88ZCM060035	M6	35	200	1.80		✓	
BS88ZCM060040	M6	40	200	2.00		✓	
BS88ZCM060045	M6	45	200	2.20		✓	
BS88ZCM060050	M6	50	200	2.50		✓	
BS88ZCM080012	M8	12	200	1.90	*	✓	*
BS88ZCM080016	M8	16	200	2.10	*	✓	*
BS88ZCM080020	M8	20	200	2.30	*	✓	*
BS88ZCM080025	M8	25	200	2.60	*	✓	*
BS88ZCM080030	M8	30	200	3.00	*	✓	*
BS88ZCM080035	M8	35	200	3.30		✓	
BS88ZCM080040	M8	40	200	3.60		✓	
BS88ZCM080045	M8	45	200	4.06		✓	
BS88ZCM080050	M8	50	200	4.20		✓	
BS88ZCM080055	M8	55	150	3.51		✓	
BS88ZCM080060	M8	60	150	3.75		✓	
BS88ZCM080065	M8	65	150	3.99		✓	
BS88ZCM080070	M8	70	100	2.82		✓	
BS88ZCM080075	M8	75	100	2.98		✓	
BS88ZCM080085	M8	85	100	3.21		✓	
BS88ZCM080100	M8	100	100	3.65		✓	

* = Bolt & Nut stock available.

? = Z: Zinc Plate (Z/P) P: Plain (PLN) / Black (Blk)

Hex Set Screw Class 8.8

Zinc Plate



HEX SET SCREW Class 8.8 AS1110.2

Part	Size	Length (mm)	Pack	BO Wgt (Kg)	Blk Kit	ZP Set	ZP Kit
BS88ZCM100012	M10	12	150	2.58		✓	
BS88ZCM100016	M10	16	150	2.70		✓	*
BS88ZCM100020	M10	20	150	3.00	*	✓	*
BS88ZCM100025	M10	25	150	3.40	*	✓	*
BS88ZCM100030	M10	30	150	3.70	*	✓	*
BS88ZCM100035	M10	35	150	4.10		✓	
BS88ZCM100040	M10	40	150	4.50		✓	
BS88ZCM100045	M10	45	150	5.06		✓	
BS88ZCM100050	M10	50	150	5.20		✓	
BS88ZCM100065	M10	65	75	3.29		✓	
BS88ZCM100070	M10	70	75	3.47		✓	
BS88ZCM100075	M10	75	75	3.66		✓	
BS88ZCM100080	M10	80	75	3.85		✓	
BS88ZCM100085	M10	85	75	4.04		✓	
BS88ZCM100100	M10	100	75	4.60		✓	
BS88ZCM120020	M12	20	100	2.90	*	✓	*
BS88ZCM120025	M12	25	100	3.40	*	✓	*
BS88ZCM120030	M12	30	100	3.70	*	✓	*
BS88ZCM120035	M12	35	100	4.00		✓	
BS88ZCM120040	M12	40	100	4.50		✓	
BS88ZCM120045	M12	45	75	3.51		✓	
BS88ZCM120050	M12	50	50	3.90		✓	
BS88ZCM120055	M12	55	50	2.78		✓	
BS88ZCM120060	M12	60	50	2.91		✓	
BS88ZCM120065	M12	65	25	1.57		✓	
BS88ZCM120070	M12	70	25	1.66		✓	
BS88ZCM120075	M12	75	25	1.75		✓	
BS88ZCM120080	M12	80	25	1.84		✓	
BS88ZCM120100	M12	100	25	2.23		✓	
BS88ZCM140025	M14	25	25	0.99	*	✓	*
BS88ZCM140030	M14	30	25	1.08	*	✓	*
BS88ZCM140035	M14	35	25	1.17	*	✓	*
BS88ZCM140040	M14	40	25	1.31		✓	
BS88ZCM140045	M14	45	25	1.37		✓	
BS88ZCM140050	M14	50	25	1.52		✓	

* = Bolt & Nut stock available.



? = Z: Zinc Plate (Z/P) P: Plain (PLN) / Black (Blk)





HIGH-TENSILE



Hex Set Screw Class 8.8

Zinc Plate

HEX SET SCREW

Class 8.8 AS1110.2

Part	Size	Length (mm)	Pack	BO Wgt (Kg)	Blk Kit	ZP Set	ZP Kit
BS88ZCM160025	M16	25	25	1.15	*	✓	*
BS88ZCM160030	M16	30	25	1.38	*	✓	*
BS88ZCM160035	M16	35	25	1.65	*	✓	*
BS88ZCM160040	M16	40	25	2.20	*	✓	*
BS88ZCM160045	M16	45	25	2.48		✓	
BS88ZCM160050	M16	50	25	2.55		✓	
BS88ZCM160055	M16	55	25	2.68		✓	
BS88ZCM160060	M16	60	25	2.80		✓	
BS88ZCM160065	M16	65	25	2.95		✓	
BS88ZCM160070	M16	70	25	3.25		✓	
BS88ZCM160075	M16	75	25	3.30		✓	
BS88ZCM160080	M16	80	25	3.60		✓	
BS88ZCM160085	M16	85	25	3.78		✓	
BS88ZCM160090	M16	90	25	3.93		✓	
BS88ZCM160100	M16	100	25	4.25		✓	
BS88ZCM200035	M20	35	25	3.63		✓	
BS88ZCM200040	M20	40	25	3.80	*	✓	*
BS88ZCM200045	M20	45	25	4.28	*	✓	*
BS88ZCM200050	M20	50	25	4.30	*	✓	*
BS88ZCM200055	M20	55	25	4.63		✓	
BS88ZCM200060	M20	60	25	4.75		✓	
BS88ZCM200065	M20	65	25	5.15		✓	
BS88ZCM200070	M20	70	20	4.20		✓	
BS88ZCM200075	M20	75	20	4.50		✓	
BS88ZCM200080	M20	80	20	4.76		✓	
BS88ZCM200085	M20	85	20	4.96		✓	
BS88ZCM200090	M20	90	20	5.16		✓	
BS88ZCM200100	M20	100	10	2.79		✓	
BS88ZCM240050	M24	50	5	1.02	*	✓	*
BS88ZCM240055	M24	55	5	1.12	*	✓	*
BS88ZCM240060	M24	60	5	1.22		✓	
BS88ZCM240065	M24	65	5	1.32		✓	
BS88ZCM240070	M24	70	5	1.42		✓	
BS88ZCM240075	M24	75	5	1.53		✓	
BS88ZCM240080	M24	80	5	1.70		✓	
BS88ZCM240085	M24	85	5	1.82		✓	
BS88ZCM240090	M24	90	5	1.97		✓	
BS88ZCM240100	M24	100	5	2.04		✓	

* = Bolt & Nut stock available.

Bolt & Nut (Kit) codes start with K

? = Z: Zinc Plate (Z/P) P: Plain (PLN) / Black (Blk)

Hex Bolt & Nut Class 8.8

Zinc Plate
Plain



HEX BOLT & NUT Class 8.8 AS1110.1 / Class 8 AS1112.1

Part	Size	Length Thread		Pack	BO Wgt Kit Wgt		Blk Kit	ZP BO	ZP Kit
		(mm)	(mm)		(Kg)	(Kg)			
BH88?CM060016	M6	16	16	200	1.00	1.50	✓	*	✓
BH88?CM060020	M6	20	20	200	1.20	1.60	✓	*	✓
BH88?CM060025	M6	25	18	200	1.40	1.80	✓	*	✓
BH88?CM060030	M6	30	18	200	1.60	2.00	✓	✓	✓
BH88?CM060035	M6	35	18	200	1.80	2.20	✓	✓	✓
BH88?CM060040	M6	40	18	200	2.00	2.40	✓	✓	✓
BH88?CM060045	M6	45	18	200	2.40	2.60		✓	✓
BH88?CM060050	M6	50	18	200	2.60	2.80	✓	✓	✓
BH88?CM060055	M6	55	18	150	2.10	2.90		✓	✓
BH88?CM060060	M6	60	18	150	2.30	2.60	✓	✓	✓
BH88?CM060065	M6	65	18	150	2.40	2.70	✓	✓	✓
BH88?CM060070	M6	70	18	150	2.60	2.80	✓	✓	✓
BH88?CM060075	M6	75	18	150	2.70	3.00	✓	✓	✓
BH88?CM060080	M6	80	18	150	2.82			✓	
BH88?CM080012	M8	12	12	200	1.60	3.00		*	✓
BH88?CM080016	M8	16	16	200	2.00	3.15	✓	*	✓
BH88?CM080020	M8	20	20	200	2.40	3.40	✓	*	✓
BH88?CM080025	M8	25	22	200	2.80	3.60	✓	*	✓
BH88?CM080030	M8	30	22	200	3.00	4.00	✓	✓	✓
BH88?CM080035	M8	35	22	200	3.40	4.50	✓	✓	✓
BH88?CM080040	M8	40	22	200	3.80	4.80	✓	✓	✓
BH88?CM080045	M8	45	22	150	3.20	3.90	✓	✓	✓
BH88?CM080050	M8	50	22	150	3.50	4.10	✓	✓	✓
BH88?CM080055	M8	55	22	150	3.80	4.50		✓	✓
BH88?CM080060	M8	60	22	150	4.10	4.90	✓	✓	✓
BH88?CM080065	M8	65	22	150	4.40	5.00	✓	✓	✓
BH88?CM080070	M8	70	22	100	3.10	3.50	✓	✓	✓
BH88?CM080075	M8	75	22	100	3.20	3.80	✓	✓	✓
BH88?CM080080	M8	80	22	100	3.40	4.00	✓	✓	✓
BH88?CM080085	M8	85	22	100	3.78			✓	
BH88?CM080090	M8	90	22	100	3.50	4.30	✓	✓	✓
BH88?CM080095	M8	95	22	100	4.20			✓	
BH88?CM080100	M8	100	22	100	4.30	4.80	✓	✓	✓
BH88?CM080110	M8	110	22	100	4.62			✓	
BH88?CM080120	M8	120	22	100	4.99			✓	
BH88?CM080130	M8	130	28	100	5.33			✓	

* = Set Screw stock available.

Bolt & Nut (Kit) codes start with K

? = Z: Zinc Plate (Z/P) P: Plain (PLN) / Black (Blk)





HIGH-TENSILE

Hex Bolt & Nut Class 8.8

Zinc Plate
Plain / Black



HEX BOLT & NUT

Class 8.8 AS1110.1 / Class 8 AS1112.1

Part	Size	Length Thread		Pack	BO Wgt Kit Wgt		Blk Kit	ZP BO	ZP Kit
		(mm)	(mm)		(Kg)	(Kg)			
BH88?CM100016	M10	16	16	150	3.00	4.00		*	✓
BH88?CM100020	M10	20	20	150	3.50	4.30	✓	*	✓
BH88?CM100025	M10	25	25	150	3.90	4.60	✓	*	✓
BH88?CM100030	M10	30	26	150	4.50	5.10	✓	*	✓
BH88?CM100035	M10	35	26	150	5.00	5.60	✓	✓	✓
BH88?CM100040	M10	40	26	150	5.40	6.00	✓	✓	✓
BH88?CM100045	M10	45	26	150	5.90	6.50	✓	✓	✓
BH88?CM100050	M10	50	26	75	3.20	3.50	✓	✓	✓
BH88?CM100055	M10	55	26	75	3.40	3.70	✓	✓	✓
BH88?CM100060	M10	60	26	75	3.60	3.90	✓	✓	✓
BH88?CM100065	M10	65	26	75	3.80	4.10	✓	✓	✓
BH88?CM100070	M10	70	26	75	4.10	4.40	✓	✓	✓
BH88?CM100075	M10	75	26	75	4.20	4.60	✓	✓	✓
BH88?CM100080	M10	80	26	75	4.40	4.80	✓	✓	✓
BH88?CM100085	M10	85	26	75	4.68			✓	
BH88?CM100090	M10	90	26	50	3.20	3.50	✓	✓	✓
BH88?CM100100	M10	100	26	50	3.50	3.80	✓	✓	✓
BH88?CM100110	M10	110	26	50	3.80	4.10	✓	✓	✓
BH88?CM100120	M10	120	26	50	4.10	4.40	✓	✓	✓
BH88?CM100130	M10	130	32	50	4.40	4.70	✓	✓	✓
BH88?CM100140	M10	140	32	50	4.50	4.80		✓	✓
BH88?CM100150	M10	150	32	50	4.50	4.90		✓	✓
BH88?CM100160	M10	160	32	50	5.36			✓	
BH88?CM100170	M10	170	32	50	5.45			✓	
BH88?CM100180	M10	180	32	25	2.90			✓	
BH88?CM100190	M10	190	32	25	3.08			✓	
BH88?CM100200	M10	200	32	25	3.22			✓	

* = Set Screw stock available.

Bolt & Nut (Kit) codes start with K

? = Z: Zinc Plate (Z/P) P: Plain (PLN) / Black (Blk)

Hex Bolt & Nut Class 8.8

Zinc Plate
Plain / Black



HEX BOLT & NUT Class 8.8 AS1110.1 / Class 8 AS1112.1

Part	Size	Length Thread		Pack	BO Wgt Kit Wgt		Blk Kit	ZP BO	ZP Kit
		(mm)	(mm)		(Kg)	(Kg)			
BH88?CM120020	M12	20	20	75	2.80	3.90	✓	*	✓
BH88?CM120025	M12	25	25	75	2.90	4.05	✓	*	✓
BH88?CM120030	M12	30	30	75	3.10	4.20	✓	*	✓
BH88?CM120035	M12	35	30	75	3.50	4.57	✓	✓	✓
BH88?CM120040	M12	40	30	75	3.80	4.87	✓	✓	✓
BH88?CM120045	M12	45	30	75	4.10	5.25	✓	✓	✓
BH88?CM120050	M12	50	30	50	3.00	5.55	✓	✓	✓
BH88?CM120055	M12	55	30	50	3.20	3.90	✓	✓	✓
BH88?CM120060	M12	60	30	50	3.30	4.05	✓	✓	✓
BH88?CM120065	M12	65	30	50	3.50	4.20	✓	✓	✓
BH88?CM120070	M12	70	30	50	3.70	4.40	✓	✓	✓
BH88?CM120075	M12	75	30	25	1.90	2.30	✓	✓	✓
BH88?CM120080	M12	80	30	25	2.00	2.35	✓	✓	✓
BH88?CM120085	M12	85	30	25	2.00	2.40		✓	✓
BH88?CM120090	M12	90	30	25	2.10	2.50	✓	✓	✓
BH88?CM120100	M12	100	30	25	2.50	2.90	✓	✓	✓
BH88?CM120110	M12	110	30	25	2.90	3.25	✓	✓	✓
BH88?CM120120	M12	120	30	25	3.10	3.50	✓	✓	✓
BH88?CM120130	M12	130	36	25	3.30	3.65	✓	✓	✓
BH88?CM120140	M12	140	36	25	3.60	3.92	✓	✓	✓
BH88?CM120150	M12	150	36	25	3.80	4.20	✓	✓	✓
BH88?CM120160	M12	160	36	20	3.13			✓	
BH88?CM120170	M12	170	36	20	3.31			✓	
BH88?CM120180	M12	180	36	20	3.50	4.40		✓	✓
BH88?CM120190	M12	190	36	20	3.67			✓	
BH88?CM120200	M12	200	36	20	3.90	4.60		✓	✓
BH88?CM140025	M14	25	25	25	1.33	1.75	✓	*	
BH88?CM140030	M14	30	30	25	1.45	1.93	✓	*	
BH88?CM140035	M14	35	35	25	1.57	2.11	✓	*	
BH88?CM140040	M14	40	34	25	1.70	2.27	✓	✓	
BH88?CM140045	M14	45	34	25	1.82	2.45	✓		
BH88?CM140050	M14	50	34	25	2.05	2.63	✓		
BH88?CM140055	M14	55	34	25	2.21	2.79	✓	✓	
BH88?CM140060	M14	60	34	25	2.36	2.91	✓	✓	
BH88?CM140065	M14	65	34	25	2.47	3.05	✓	✓	
BH88?CM140070	M14	70	34	25	2.63	3.19	✓	✓	
BH88?CM140075	M14	75	34	25	2.78	3.35	✓	✓	
BH88?CM140080	M14	80	34	25	2.93	3.45	✓	✓	
BH88?CM140085	M14	85	34	25	3.05	3.58	✓	✓	
BH88?CM140090	M14	90	34	25	3.18	3.73	✓	✓	
BH88?CM140100	M14	100	34	25	3.48	4.11	✓	✓	

? = Z: Zinc Plate (Z/P) P: Plain (PLN) / Black (Blk)





HIGH-TENSILE

Hex Bolt & Nut Class 8.8

Zinc Plate
Plain / Black



HEX BOLT & NUT

Class 8.8 AS1110.1 / Class 8 AS1112.1

Part	Size	Length		Pack	BO Wgt Kit Wgt		Blk Kit	ZP BO	ZP Kit
		(mm)	(mm)		(Kg)	(Kg)			
BH88?CM160025	M16	25	25	25	1.50	2.82	✓	*	✓
BH88?CM160030	M16	30	30	25	1.70	2.47	✓	*	✓
BH88?CM160035	M16	35	35	25	1.90	2.70	✓	*	✓
BH88?CM160040	M16	40	38	25	2.20	2.92	✓	*	✓
BH88?CM160045	M16	45	38	25	2.40	3.15	✓	✓	✓
BH88?CM160050	M16	50	38	25	2.60	3.40	✓	✓	✓
BH88?CM160055	M16	55	38	25	2.90	3.63	✓	✓	✓
BH88?CM160060	M16	60	38	25	3.00	3.80	✓	✓	✓
BH88?CM160065	M16	65	38	25	3.20	4.00	✓	✓	✓
BH88?CM160070	M16	70	38	25	3.40	4.18	✓	✓	✓
BH88?CM160075	M16	75	38	25	3.60	4.40	✓	✓	✓
BH88?CM160080	M16	80	38	25	3.80	4.55	✓	✓	✓
BH88?CM160085	M16	85	38	25	4.00	5.00		✓	✓
BH88?CM160090	M16	90	38	25	4.20	5.95	✓	✓	✓
BH88?CM160100	M16	100	38	25	4.60	5.33	✓	✓	✓
BH88?CM160110	M16	110	38	15	3.00	3.43	✓	✓	✓
BH88?CM160120	M16	120	38	15	3.20	3.62	✓	✓	✓
BH88?CM160130	M16	130	44	15	3.40	3.86	✓	✓	✓
BH88?CM160140	M16	140	44	15	3.70	4.13	✓	✓	✓
BH88?CM160150	M16	150	44	15	3.90	4.33	✓	✓	✓
BH88?CM160160	M16	160	44	15	4.17			✓	
BH88?CM160170	M16	170	44	15	4.45			✓	
BH88?CM160180	M16	180	44	15	4.70	5.20	✓	✓	✓
BH88?CM160190	M16	190	44	15	4.92			✓	
BH88?CM160200	M16	200	44	15	5.20	5.62	✓	✓	✓
BH88?CM160210	M16	210	57	10	3.58			✓	
BH88?CM160220	M16	220	57	10	3.74			✓	
BH88?CM160230	M16	230	57	10	3.90			✓	
BH88?CM160240	M16	240	57	10	4.06			✓	
BH88?CM160250	M16	250	57	10	4.22			✓	
BH88?CM160260	M16	260	57	10	4.38			✓	
BH88?CM160270	M16	270	57	10	4.55			✓	
BH88?CM160280	M16	280	57	10	4.71			✓	
BH88?CM160290	M16	290	57	10	4.87			✓	
BH88?CM160300	M16	300	57	10	5.02			✓	

* = Set Screw stock available.

Bolt & Nut (Kit) codes start with K

? = Z: Zinc Plate (Z/P) P: Plain (PLN) / Black (Blk)

Hex Bolt & Nut Class 8.8

Zinc Plate
Plain / Black



HEX BOLT & NUT Class 8.8 AS1110.1 / Class 8 AS1112.1

Part	Size	Length Thread		Pack	BO Wgt Kit Wgt		Blk Kit	ZP BO	ZP Kit
		(mm)	(mm)		(Kg)	(Kg)			
BH88?CM180040	M18	40	40	25	3.03	4.32	✓	*	
BH88?CM180050	M18	50	42	25	3.43	4.62	✓	✓	
BH88?CM180060	M18	60	42	20	3.06	4.10	✓	✓	
BH88?CM180070	M18	70	42	20	3.62	4.47	✓	✓	
BH88?CM180075	M18	75	42	20	3.82	4.70	✓	✓	
BH88?CM180080	M18	80	42	20	4.02	4.89	✓	✓	
BH88?CM180090	M18	90	42	20	4.40	5.34	✓	✓	
BH88?CM180100	M18	100	42	20	4.80	5.80	✓	✓	
BH88?CM180120	M18	120	42	15	4.20	4.86	✓	✓	
BH88?CM180150	M18	150	48	15	5.03	5.65	✓	✓	

* = Set Screw stock available.



Bolt & Nut (Kit) codes start with K

? = Z: Zinc Plate (Z/P) P: Plain (PLN) / Black (Blk)

April 2011 Quality Fasteners Since 1935





HIGH-TENSILE

Hex Bolt & Nut Class 8.8

Zinc Plate
Plain / Black



HEX BOLT & NUT

Class 8.8 AS1110.1 / Class 8 AS1112.1

Part	Size	Length Thread		Pack	BO Wgt Kit Wgt		Blk Kit	ZP BO	ZP Kit
		(mm)	(mm)		(Kg)	(Kg)			
BH88?CM200040	M20	40	40	25	4.25	5.72	✓	*	✓
BH88?CM200045	M20	45	45	25	4.30	5.78	✓	*	✓
BH88?CM200050	M20	50	46	25	4.40	5.85	✓	*	✓
BH88?CM200055	M20	55	46	25	4.60	6.10	✓	✓	✓
BH88?CM200060	M20	60	46	25	4.80	6.47	✓	✓	✓
BH88?CM200065	M20	65	46	20	5.00	6.70	✓	✓	✓
BH88?CM200070	M20	70	46	20	5.20	6.90	✓	✓	✓
BH88?CM200075	M20	75	46	20	5.40	7.00	✓	✓	✓
BH88?CM200080	M20	80	46	20	5.60	7.20	✓	✓	✓
BH88?CM200085	M20	85	46	20	5.70	7.40		✓	✓
BH88?CM200090	M20	90	46	20	5.85	7.60	✓	✓	✓
BH88?CM200100	M20	100	46	10	3.10	3.67	✓	✓	✓
BH88?CM200110	M20	110	46	10	3.30	3.87	✓	✓	✓
BH88?CM200120	M20	120	46	10	3.50	4.06	✓	✓	✓
BH88?CM200130	M20	130	52	10	3.70	4.26	✓	✓	✓
BH88?CM200140	M20	140	52	10	3.90	4.45	✓	✓	✓
BH88?CM200150	M20	150	52	10	4.10	4.65	✓	✓	✓
BH88?CM200160	M20	160	52	10	4.46			✓	
BH88?CM200170	M20	170	52	10	4.70	5.00		✓	✓
BH88?CM200180	M20	180	52	10	4.90	5.53	✓	✓	✓
BH88?CM200190	M20	190	52	10	5.19			✓	
BH88?CM200200	M20	200	52	10	5.50	6.04	✓	✓	✓
BH88?CM200210	M20	210	65	5	2.84			✓	
BH88?CM200220	M20	220	65	5	2.95			✓	
BH88?CM200230	M20	230	65	5	3.06			✓	
BH88?CM200240	M20	240	65	5	3.21			✓	
BH88?CM200250	M20	250	65	5	3.29			✓	
BH88?CM200260	M20	260	65	5	3.46			✓	
BH88?CM200270	M20	270	65	5	3.54			✓	
BH88?CM200280	M20	280	65	5	3.63			✓	
BH88?CM200290	M20	290	65	5	3.74			✓	
BH88?CM200300	M20	300	65	5	3.85			✓	

* = Set Screw stock available.

Bolt & Nut (Kit) codes start with K

? = Z: Zinc Plate (Z/P) P: Plain (PLN) / Black (Blk)

Hex Bolt & Nut Class 8.8

Zinc Plate
Plain / Black



HEX BOLT & NUT Class 8.8 AS1110.1 / Class 8 AS1112.1

Part	Size	Length Thread		Pack	BO Wgt Kit Wgt		Blk Kit	ZP BO	ZP Kit
		(mm)	(mm)		(Kg)	(Kg)			
BH88?CM240050	M24	50	50	5	1.56	2.08	✓	*	✓
BH88?CM240055	M24	55	54	5	1.60	2.16	✓	*	✓
BH88?CM240060	M24	60	54	5	1.70	2.24	✓	✓	✓
BH88?CM240065	M24	65	54	5	1.80	2.36	✓	✓	✓
BH88?CM240070	M24	70	54	5	1.90	2.45	✓	✓	✓
BH88?CM240075	M24	75	54	5	2.00	2.53	✓		✓
BH88?CM240080	M24	80	54	5	2.07	2.59	✓	✓	✓
BH88?CM240085	M24	85	54	5	2.10	2.68		✓	✓
BH88?CM240090	M24	90	54	5	2.20	2.73	✓	✓	✓
BH88?CM240100	M24	100	54	5	2.40	2.87	✓	✓	✓
BH88?CM240110	M24	110	54	5	2.50	3.02	✓	✓	✓
BH88?CM240120	M24	120	54	5	2.60	3.16	✓	✓	✓
BH88?CM240130	M24	130	60	5	2.80	3.30	✓	✓	✓
BH88?CM240140	M24	140	60	5	2.90	3.44	✓	✓	✓
BH88?CM240150	M24	150	60	5	3.10	3.58	✓	✓	✓
BH88?CM240160	M24	160	60	5	3.20	3.75	✓	✓	✓
BH88?CM240170	M24	170	60	5	3.30			✓	
BH88?CM240180	M24	180	60	5	3.40	4.06	✓	✓	✓
BH88?CM240190	M24	190	60	5	3.54			✓	
BH88?CM240200	M24	200	60	5	3.65	4.35	✓	✓	✓
BH88?CM240210	M24	210	73	5	3.80			✓	
BH88?CM240220	M24	220	73	5	4.00	4.49	✓	✓	✓
BH88?CM240230	M24	230	73	5	4.20			✓	
BH88?CM240240	M24	240	73	5	4.40	4.91	✓	✓	✓
BH88?CM240250	M24	250	73	5	4.50	5.50	✓	✓	✓
BH88?CM240260	M24	260	73	5		5.75	✓		
BH88?CM240270	M24	270	73	5		5.85	✓		
BH88?CM240280	M24	280	73	5		6.05	✓		
BH88?CM240290	M24	290	73	5		6.15	✓		
BH88?CM240300	M24	300	73	5		6.30	✓		

* = Set Screw stock available.



Bolt & Nut (Kit) codes start with K

? = Z: Zinc Plate (Z/P) P: Plain (PLN) / Black (Blk)





HIGH-TENSILE

Hex Bolt & Nut Class 8.8

Zinc Plate
Plain / Black



HEX BOLT & NUT Class 8.8 AS1110.1 / Class 8 AS1112.1

Part	Size	Length Thread		Pack	Kit Wgt (Kg)	Blk Kit
		(mm)	(mm)			
KBH88PCM300070	M30	70	66	5	3.75	✓
KBH88PCM300075	M30	75	66	5	4.05	✓
KBH88PCM300080	M30	80	66	5	4.25	✓
KBH88PCM300085	M30	85	66	5	4.75	✓
KBH88PCM300090	M30	90	66	5	5.15	✓
KBH88PCM300100	M30	100	66	5	5.50	✓
KBH88PCM300110	M30	110	66	5	5.85	✓
KBH88PCM300120	M30	120	66	5	6.10	✓
KBH88PCM300130	M30	130	72	5	6.40	✓
KBH88PCM300140	M30	140	72	5	6.65	✓
KBH88PCM300150	M30	150	72	5	7.00	✓
KBH88PCM300160	M30	160	72	5	7.30	✓
KBH88PCM300170	M30	170	72	5	7.50	✓
KBH88PCM300180	M30	180	72	5	7.80	✓
KBH88PCM300190	M30	190	72	5	8.10	✓
KBH88PCM300200	M30	200	72	5	8.40	✓
KBH88PCM300210	M30	210	85	5	8.75	✓
KBH88PCM300220	M30	220	85	5	9.10	✓
KBH88PCM300230	M30	230	85	5	9.40	✓
KBH88PCM300240	M30	240	85	5	9.60	✓
KBH88PCM300250	M30	250	85	5	9.95	✓
KBH88PCM300260	M30	260	85	5	10.07	✓
KBH88PCM300270	M30	270	85	5	10.37	✓
KBH88PCM300280	M30	280	85	5	10.65	✓
KBH88PCM300290	M30	290	85	5	10.96	✓
KBH88PCM300300	M30	300	85	5	11.25	✓
KBH88PCM300320	M30	320	85	2	4.74	✓
KBH88PCM300350	M30	350	85	2	5.10	✓
KBH88PCM300380	M30	380	85	2	5.45	✓
KBH88PCM300400	M30	400	85	2	5.69	✓

? = Z: Zinc Plate (Z/P) P: Plain (PLN) / Black (Blk)

Hex Bolt & Nut Class 8.8

Zinc Plate
Plain / Black



HEX BOLT & NUT
Class 8.8 AS1110.1 / Class 8 AS1112.1

Part	Size	Length Thread		Pack	Kit Wgt (Kg)	Blk Kit
		(mm)	(mm)			
KBH88PCM360070	M36	70	70	2	2.20	✓
KBH88PCM360075	M36	75	75	2	2.40	✓
KBH88PCM360090	M36	90	78	2	2.80	✓
KBH88PCM360100	M36	100	78	2	2.94	✓
KBH88PCM360110	M36	110	78	2	3.06	✓
KBH88PCM360120	M36	120	78	2	3.16	✓
KBH88PCM360130	M36	130	84	2	3.26	✓
KBH88PCM360140	M36	140	84	2	3.42	✓
KBH88PCM360150	M36	150	84	2	3.58	✓
KBH88PCM360160	M36	160	84	2	3.80	✓
KBH88PCM360170	M36	170	84	2	3.90	✓
KBH88PCM360180	M36	180	84	2	4.00	✓
KBH88PCM360190	M36	190	84	2	4.14	✓
KBH88PCM360200	M36	200	84	2	4.26	✓
KBH88PCM360210	M36	210	97	2	4.50	✓
KBH88PCM360220	M36	220	97	2	4.58	✓
KBH88PCM360230	M36	230	97	2	4.70	✓
KBH88PCM360240	M36	240	97	2	4.90	✓
KBH88PCM360250	M36	250	97	2	5.10	✓
KBH88PCM360260	M36	260	97	2	5.40	✓
KBH88PCM360270	M36	270	97	2	5.50	✓
KBH88PCM360280	M36	280	97	2	5.54	✓
KBH88PCM360290	M36	290	97	2	5.60	✓
KBH88PCM360300	M36	300	97	2	5.64	✓



? = Z: Zinc Plate (Z/P) P: Plain (PLN) / Black (Blk)





HIGH-TENSILE

Hex Bolt & Nut Grade 5

Zinc Plate
Plain / Black



UNC HEX BOLT & NUT GRADE 5 AS2465

Part	Size	Length (inch)	Pack	BO Wgt (Kg)	Kit Wgt (Kg)	Blk BO	Blk Kit	ZP BO	ZP Kit
BHG5?C0250075	1/4"	3/4"	200	1.40	2.00	✓	✓	✓	
BHG5?C0250100	1/4"	1"	200	1.60	2.20	✓	✓	✓	
BHG5?C0250125	1/4"	1 1/4"	200	1.89		✓			
BHG5?C0250150	1/4"	1 1/2"	200	2.20	2.80	✓	✓	✓	
BHG5?C0250175	1/4"	1 3/4"	200	2.52		✓			
BHG5?C0250200	1/4"	2"	200	2.80	3.40	✓	✓	✓	
BHG5?C0250225	1/4"	2 1/4"	150	2.36		✓			
BHG5?C0250250	1/4"	2 1/2"	150	2.55	3.00	✓	✓	✓	
BHG5?C0250275	1/4"	2 3/4"	150	2.80		✓			
BHG5?C0250300	1/4"	3"	150	3.00	3.45	✓	✓	✓	
BHG5?C0250350	1/4"	3 1/2"	100	3.60	4.00	✓	✓		
BHG5?C0250400	1/4"	4"	100	4.05	4.45	✓	✓	✓	
BHG5?C0250450	1/4"	4 1/2"	100	2.97		✓			
BHG5?C0310050	5/16"	1/2"	200	1.76		✓			
BHG5?C0310075	5/16"	3/4"	200	2.20	3.20	✓	✓	✓	✓
BHG5?C0310100	5/16"	1"	200	2.60	3.60	✓	✓	✓	✓
BHG5?C0310125	5/16"	1 1/4"	200	3.00	4.00	✓	✓		
BHG5?C0310150	5/16"	1 1/2"	200	3.60	4.60	✓	✓	✓	
BHG5?C0310175	5/16"	1 3/4"	150	3.00	3.75	✓	✓		
BHG5?C0310200	5/16"	2"	150	3.45	4.20	✓	✓	✓	
BHG5?C0310225	5/16"	2 1/4"	150	3.76		✓			
BHG5?C0310250	5/16"	2 1/2"	150	4.05	4.80	✓	✓	✓	
BHG5?C0310275	5/16"	2 3/4"	100	2.99		✓			
BHG5?C0310300	5/16"	3"	100	3.20	3.70	✓	✓	✓	
BHG5?C0310350	5/16"	3 1/2"	100	3.70	4.21	✓	✓		
BHG5?C0310400	5/16"	4"	100	4.20	4.70	✓	✓		
BHG5?C0310450	5/16"	4 1/2"	100	4.70		✓			
BHG5?C0310500	5/16"	5"	100	5.20		✓			
BHG5?C0310600	5/16"	6"	100	6.24		✓			

Bolt & Nut (Kit) codes start with K

? = Z: Zinc Plate (Z/P) P: Plain (PLN) / Black (Blk)

Hex Bolt & Nut Grade 5

Zinc Plate
Plain / Black



UNC HEX BOLT & NUT GRADE 5 AS2465

Part	Size	Length (inch)	Pack	BO Wgt (Kg)	Kit Wgt (Kg)	Blk BO	Blk Kit	ZP BO	ZP Kit
BHG5?C0370050	3/8"	1/2"	200	2.56		✓			
BHG5?C0370075	3/8"	3/4"	200	3.20	4.60	✓	✓	✓	✓
BHG5?C0370100	3/8"	1"	200	3.80	5.20	✓	✓	✓	✓
BHG5?C0370125	3/8"	1 1/4"	200	4.40	5.80	✓	✓	✓	✓
BHG5?C0370150	3/8"	1 1/2"	150	3.90	4.95	✓	✓	✓	✓
BHG5?C0370175	3/8"	1 3/4"	150	4.35	5.40	✓	✓	✓	
BHG5?C0370200	3/8"	2"	100	3.30	4.00	✓	✓	✓	
BHG5?C0370225	3/8"	2 1/4"	100	3.62		✓			
BHG5?C0370250	3/8"	2 1/2"	100	4.00	4.70	✓	✓	✓	
BHG5?C0370275	3/8"	2 3/4"	100	4.39		✓			
BHG5?C0370300	3/8"	3"	100	4.70	5.40	✓	✓	✓	
BHG5?C0370350	3/8"	3 1/2"	50	2.70	3.05	✓	✓	✓	
BHG5?C0370400	3/8"	4"	50	3.05	3.40	✓	✓	✓	
BHG5?C0370450	3/8"	4 1/2"	50	3.40	3.75	✓	✓	✓	
BHG5?C0370500	3/8"	5"	50	3.75	4.10	✓	✓	✓	
BHG5?C0370550	3/8"	5 1/2"	50	4.45		✓			
BHG5?C0370600	3/8"	6"	50	5.09	5.44	✓	✓	✓	
BHG5?C0430150	7/16"	1 1/2"	100	3.50		✓			
BHG5?C0430200	7/16"	2"	100	4.50		✓			
BHG5?C0430250	7/16"	2 1/2"	75	4.13		✓			
BHG5?C0430300	7/16"	3"	75	4.80		✓			
BHG5?C0430400	7/16"	4"	50	4.20		✓			



Bolt & Nut (Kit) codes start with K

? = Z: Zinc Plate (Z/P) P: Plain (PLN) / Black (Blk)





HIGH-TENSILE

Hex Bolt & Nut Grade 8

Zinc Plate
Plain / Black



UNC HEX BOLT & NUT GRADE 8 AS2465

Part	Size	Length (inch)	Pack	BO Wgt (Kg)	Kit Wgt (Kg)	Blk BO	Blk Kit	ZP BO	ZP Kit
BHG8?C0250050	1/4"	1/2"	200	1.07	1.72		✓	✓	
BHG8?C0250075	1/4"	3/4"	200	1.40	2.00	✓	✓	✓	✓
BHG8?C0250100	1/4"	1"	200	1.60	2.20	✓	✓	✓	✓
BHG8?C0250125	1/4"	1 1/4"	200	1.89	2.54	✓	✓	✓	
BHG8?C0250150	1/4"	1 1/2"	200	2.21	2.80	✓	✓	✓	✓
BHG8?C0250175	1/4"	1 3/4"	200	2.52	3.12	✓	✓	✓	
BHG8?C0250200	1/4"	2"	200	2.80	3.40	✓	✓	✓	✓
BHG8?C0250225	1/4"	2 1/4"	150	2.36	2.84	✓	✓	✓	
BHG8?C0250250	1/4"	2 1/2"	150	2.60	3.00	✓	✓	✓	✓
BHG8?C0250275	1/4"	2 3/4"	150	2.83	3.31	✓	✓	✓	
BHG8?C0250300	1/4"	3"	150	3.06	3.45	✓	✓	✓	✓
BHG8?C0250325	1/4"	3 1/4"	150		3.78		✓		
BHG8?C0250350	1/4"	3 1/2"	100	2.36	2.68	✓	✓	✓	✓
BHG8?C0250400	1/4"	4"	100	2.50	3.00	✓	✓	✓	✓
BHG8?C0250450	1/4"	4 1/2"	100	2.98	3.31	✓	✓	✓	
BHG8?C0250500	1/4"	5"	100	3.30	3.62	✓	✓	✓	
BHG8?C0250550	1/4"	5 1/2"	100	3.61	3.93	✓	✓	✓	
BHG8?C0250600	1/4"	6"	100	3.92	4.25	✓	✓	✓	
BHG8?C0310050	5/16"	1/2"	200	1.81	2.77	✓	✓	✓	
BHG8?C0310075	5/16"	3/4"	200	2.20	3.20	✓	✓	✓	✓
BHG8?C0310100	5/16"	1"	200	2.60	3.60	✓	✓	✓	✓
BHG8?C0310125	5/16"	1 1/4"	200	3.00	4.00	✓	✓	✓	✓
BHG8?C0310150	5/16"	1 1/2"	200	3.60	4.60	✓	✓	✓	✓
BHG8?C0310175	5/16"	1 3/4"	150	3.00	3.75	✓	✓	✓	✓
BHG8?C0310200	5/16"	2"	150	3.45	4.20	✓	✓	✓	✓
BHG8?C0310225	5/16"	2 1/4"	150	3.76	4.48	✓	✓	✓	
BHG8?C0310250	5/16"	2 1/2"	150	4.13	4.80	✓	✓	✓	✓
BHG8?C0310275	5/16"	2 3/4"	100	2.99	3.48	✓	✓	✓	
BHG8?C0310300	5/16"	3"	100	3.20	3.70	✓	✓	✓	✓
BHG8?C0310325	5/16"	3 1/4"	100		3.97		✓		
BHG8?C0310350	5/16"	3 1/2"	100	3.73	4.21	✓	✓	✓	✓
BHG8?C0310400	5/16"	4"	100	4.22	4.70	✓	✓	✓	✓
BHG8?C0310450	5/16"	4 1/2"	100	4.71	5.19	✓	✓	✓	
BHG8?C0310500	5/16"	5"	100	5.19	5.67	✓	✓	✓	
BHG8?C0310550	5/16"	5 1/2"	100	5.68	6.16	✓	✓	✓	
BHG8?C0310600	5/16"	6"	100	6.17	6.65	✓	✓	✓	

Bolt & Nut (Kit) codes start with K

? = Z: Zinc Plate (Z/P) P: Plain (PLN) / Black (Blk)

Hex Bolt & Nut Grade 8

Zinc Plate
Plain / Black



UNC HEX BOLT & NUT GRADE 8 AS2465

Part	Size	Length (inch)	Pack	BO Wgt (Kg)	Kit Wgt (Kg)	Blk BO	Blk Kit	ZP BO	ZP Kit
BHG8?C0370050	3/8"	1/2"	200	2.66	4.06	✓	✓	✓	
BHG8?C0370075	3/8"	3/4"	200	3.20	4.60	✓	✓	✓	✓
BHG8?C0370100	3/8"	1"	200	3.80	5.20	✓	✓	✓	✓
BHG8?C0370125	3/8"	1 1/4"	200	4.41	5.80	✓	✓	✓	✓
BHG8?C0370150	3/8"	1 1/2"	150	3.90	4.95	✓	✓	✓	✓
BHG8?C0370175	3/8"	1 3/4"	100	2.92	3.60	✓	✓	✓	✓
BHG8?C0370200	3/8"	2"	100	3.26	4.00	✓	✓	✓	✓
BHG8?C0370225	3/8"	2 1/4"	100	3.62	4.32	✓	✓	✓	
BHG8?C0370250	3/8"	2 1/2"	100	3.97	4.70	✓	✓	✓	✓
BHG8?C0370275	3/8"	2 3/4"	100	4.32	5.02	✓	✓	✓	
BHG8?C0370300	3/8"	3"	100	4.68	5.40	✓	✓	✓	✓
BHG8?C0370325	3/8"	3 1/4"	100	5.47	5.80	✓	✓		
BHG8?C0370350	3/8"	3 1/2"	50	2.69	3.05	✓	✓	✓	✓
BHG8?C0370400	3/8"	4"	50	3.04	3.40	✓	✓	✓	✓
BHG8?C0370450	3/8"	4 1/2"	50	3.39	3.75	✓	✓	✓	✓
BHG8?C0370500	3/8"	5"	50	3.75	4.10	✓	✓	✓	✓
BHG8?C0370550	3/8"	5 1/2"	50	4.10	4.45	✓	✓	✓	
BHG8?C0370600	3/8"	6"	50	4.45	4.80	✓	✓	✓	✓
BHG8?C0430075	7/16"	3/4"	100	2.31	3.59		✓	✓	
BHG8?C0430100	7/16"	1"	100	2.70	3.90	✓	✓	✓	✓
BHG8?C0430125	7/16"	1 1/4"	100	3.07	4.35	✓	✓	✓	
BHG8?C0430150	7/16"	1 1/2"	100	3.50	4.70	✓	✓	✓	✓
BHG8?C0430175	7/16"	1 3/4"	100	4.03	5.25	✓	✓	✓	
BHG8?C0430200	7/16"	2"	100	4.50	5.70	✓	✓	✓	✓
BHG8?C0430225	7/16"	2 1/4"	75	3.75	4.71	✓	✓	✓	
BHG8?C0430250	7/16"	2 1/2"	75	4.13	5.03	✓	✓	✓	✓
BHG8?C0430275	7/16"	2 3/4"	75	4.47	5.43	✓	✓	✓	
BHG8?C0430300	7/16"	3"	75	4.83	5.70	✓	✓	✓	✓
BHG8?C0430350	7/16"	3 1/2"	50	3.70	4.34	✓	✓	✓	✓
BHG8?C0430400	7/16"	4"	50	4.18	4.82	✓	✓	✓	✓
BHG8?C0430450	7/16"	4 1/2"	50	4.66	5.30	✓	✓	✓	✓
BHG8?C0430500	7/16"	5"	50	5.14	5.78	✓	✓	✓	✓
BHG8?C0430550	7/16"	5 1/2"	50	5.62	6.26	✓	✓	✓	
BHG8?C0430600	7/16"	6"	50	6.10	6.74	✓	✓	✓	
BHG8?C0430650	7/16"	6 1/2"	25		3.61		✓		
BHG8?C0430700	7/16"	7"	25		3.85		✓		



Bolt & Nut (Kit) codes start with K

? = Z: Zinc Plate (Z/P) P: Plain (PLN) / Black (Blk)





Hex Bolt & Nut Grade 8

Zinc Plate
Plain / Black



UNC HEX BOLT & NUT GRADE 8 AS2465

Part	Size	Length (inch)	Pack	BO Wgt (Kg)	Kit Wgt (Kg)	Blk BO	Blk Kit	ZP BO	ZP Kit
BHG8?C0500075	1/2"	3/4"	75	2.76	4.00	✓	✓	✓	
BHG8?C0500100	1/2"	1"	75	3.15	4.35	✓	✓	✓	✓
BHG8?C0500125	1/2"	1 1/4"	75	3.53	4.73	✓	✓	✓	✓
BHG8?C0500150	1/2"	1 1/2"	75	3.98	5.18	✓	✓	✓	✓
BHG8?C0500175	1/2"	1 3/4"	75	4.43	5.63	✓	✓	✓	✓
BHG8?C0500200	1/2"	2"	50	3.30	4.10	✓	✓	✓	✓
BHG8?C0500225	1/2"	2 1/4"	50	3.57	4.40	✓	✓	✓	✓
BHG8?C0500250	1/2"	2 1/2"	50	3.90	4.70	✓	✓	✓	✓
BHG8?C0500275	1/2"	2 3/4"	50	4.20	5.00	✓	✓	✓	✓
BHG8?C0500300	1/2"	3"	25	2.25	2.65	✓	✓	✓	✓
BHG8?C0500325	1/2"	3 1/4"	25		2.84		✓		✓
BHG8?C0500350	1/2"	3 1/2"	25	2.58	2.98	✓	✓	✓	✓
BHG8?C0500400	1/2"	4"	25	2.88	3.28	✓	✓	✓	✓
BHG8?C0500450	1/2"	4 1/2"	25	3.20	3.60	✓	✓	✓	✓
BHG8?C0500500	1/2"	5"	25	3.50	3.90	✓	✓	✓	✓
BHG8?C0500550	1/2"	5 1/2"	25	3.83	4.23	✓	✓	✓	✓
BHG8?C0500600	1/2"	6"	25	4.13	4.53	✓	✓	✓	✓
BHG8?C0500650	1/2"	6 1/2"	20	3.58	3.90	✓	✓	✓	
BHG8?C0500700	1/2"	7"	20	3.80	4.12	✓	✓	✓	
BHG8?C0500750	1/2"	7 1/2"	20	4.09	4.24	✓	✓	✓	
BHG8?C0500800	1/2"	8"	20	4.30	4.48	✓	✓	✓	
BHG8?C0500900	1/2"	9"	20	4.81		✓			
BHG8?C0501000	1/2"	10"	20	5.31		✓			
BHG8?C0501100	1/2"	11"	10	2.91		✓			
BHG8?C0501200	1/2"	12"	10	3.16		✓			
BHG8?C0560100	9/16"	1"	25	1.28		✓		✓	
BHG8?C0560125	9/16"	1 1/4"	25	1.44		✓		✓	
BHG8?C0560150	9/16"	1 1/2"	25	1.60		✓		✓	
BHG8?C0560175	9/16"	1 3/4"	25	1.80		✓		✓	
BHG8?C0560200	9/16"	2"	25	2.00		✓		✓	
BHG8?C0560225	9/16"	2 1/4"	25	2.20		✓		✓	
BHG8?C0560250	9/16"	2 1/2"	25	2.40		✓		✓	
BHG8?C0560300	9/16"	3"	25	2.80		✓		✓	
BHG8?C0560350	9/16"	3 1/2"	25	3.20		✓		✓	
BHG8?C0560400	9/16"	4"	25	3.60		✓		✓	
BHG8?C0560450	9/16"	4 1/2"	15	2.68		✓		✓	
BHG8?C0560500	9/16"	5"	15	2.70		✓		✓	
BHG8?C0560550	9/16"	5 1/2"	15	2.87		✓		✓	
BHG8?C0560600	9/16"	6"	15	3.24		✓		✓	

Bolt & Nut (Kit) codes start with K

? = Z: Zinc Plate (Z/P) P: Plain (PLN) / Black (Blk)

Hex Bolt & Nut Grade 8

Zinc Plate
Plain / Black



UNC HEX BOLT & NUT GRADE 8 AS2465

Part	Size	Length (inch)	Pack	BO Wgt (Kg)	Kit Wgt (Kg)	Blk BO	Blk Kit	ZP BO	ZP Kit
BHG8?C0620100	5/8"	1"	25	1.73	2.55	✓	✓	✓	
BHG8?C0620125	5/8"	1 1/4"	25	1.93	2.73	✓	✓	✓	✓
BHG8?C0620150	5/8"	1 1/2"	25	2.13	2.93	✓	✓	✓	✓
BHG8?C0620175	5/8"	1 3/4"	25	2.38	3.18	✓	✓	✓	✓
BHG8?C0620200	5/8"	2"	25	2.60	3.40	✓	✓	✓	✓
BHG8?C0620225	5/8"	2 1/4"	25	2.83	3.66	✓	✓	✓	✓
BHG8?C0620250	5/8"	2 1/2"	25	3.08	3.88	✓	✓	✓	✓
BHG8?C0620275	5/8"	2 3/4"	25	3.34	4.14	✓	✓	✓	✓
BHG8?C0620300	5/8"	3"	25	3.58	4.38	✓	✓	✓	✓
BHG8?C0620325	5/8"	3 1/4"	25	3.81		✓		✓	
BHG8?C0620350	5/8"	3 1/2"	25	4.05	4.85	✓	✓	✓	✓
BHG8?C0620400	5/8"	4"	25	4.55	5.35	✓	✓	✓	✓
BHG8?C0620450	5/8"	4 1/2"	15	3.03	3.52	✓	✓	✓	✓
BHG8?C0620500	5/8"	5"	15	3.32	3.80	✓	✓	✓	✓
BHG8?C0620550	5/8"	5 1/2"	15	3.62	4.10	✓	✓	✓	✓
BHG8?C0620600	5/8"	6"	15	3.90	4.38	✓	✓	✓	✓
BHG8?C0620650	5/8"	6 1/2"	15	4.05	4.60	✓	✓	✓	
BHG8?C0620700	5/8"	7"	15	4.22	4.89	✓	✓	✓	
BHG8?C0620750	5/8"	7 1/2"	15	4.49	5.17	✓	✓	✓	
BHG8?C0620800	5/8"	8"	15	5.15	5.46	✓	✓	✓	
BHG8?C0620850	5/8"	8 1/2"	15	5.37	5.86	✓	✓		
BHG8?C0620900	5/8"	9"	15	5.67	6.16	✓	✓		
BHG8?C0620950	5/8"	9 1/2"	15		6.45		✓		
BHG8?C0621000	5/8"	10"	15	6.43	6.75	✓	✓		
BHG8?C0621100	5/8"	11"	10	4.56		✓			
BHG8?C0621200	5/8"	12"	10	4.90		✓			
BHG8?C0621300	5/8"	13"	10	5.16		✓			
BHG8?C0621400	5/8"	14"	10	5.60		✓			
BHG8?C0621500	5/8"	15"	10	5.76		✓			



Bolt & Nut (Kit) codes start with K

? = Z: Zinc Plate (Z/P) P: Plain (PLN) / Black (Blk)





Hex Bolt & Nut Grade 8

Zinc Plate
Plain / Black



UNC HEX BOLT & NUT GRADE 8 AS2465

Part	Size	Length (inch)	Pack	BO Wgt (Kg)	Kit Wgt (Kg)	Blk BO	Blk Kit	ZP BO	ZP Kit
BHG8?C0750100	3/4"	1"	25	2.78	4.08	✓	✓		
BHG8?C0750125	3/4"	1 1/4"	25	3.07	4.37	✓	✓		
BHG8?C0750150	3/4"	1 1/2"	25	3.38	4.70	✓	✓	✓	✓
BHG8?C0750175	3/4"	1 3/4"	25	3.58	4.96	✓	✓	✓	
BHG8?C0750200	3/4"	2"	25	3.98	5.30	✓	✓	✓	✓
BHG8?C0750225	3/4"	2 1/4"	25	4.33	5.64	✓	✓	✓	✓
BHG8?C0750250	3/4"	2 1/2"	20	3.76	4.85	✓	✓	✓	✓
BHG8?C0750275	3/4"	2 3/4"	20	4.04	5.10	✓	✓	✓	✓
BHG8?C0750300	3/4"	3"	20	4.32	5.38	✓	✓	✓	✓
BHG8?C0750325	3/4"	3 1/4"	20	4.60	5.64			✓	✓
BHG8?C0750350	3/4"	3 1/2"	20	4.88	5.94	✓	✓	✓	✓
BHG8?C0750400	3/4"	4"	10	2.72	3.25	✓	✓	✓	✓
BHG8?C0750450	3/4"	4 1/2"	10	3.00	3.53	✓	✓	✓	✓
BHG8?C0750500	3/4"	5"	10	3.29	3.82	✓	✓	✓	✓
BHG8?C0750550	3/4"	5 1/2"	10	3.57	4.10	✓	✓	✓	
BHG8?C0750600	3/4"	6"	10	3.85	4.38	✓	✓	✓	✓
BHG8?C0750650	3/4"	6 1/2"	10	4.13	4.57	✓	✓	✓	
BHG8?C0750700	3/4"	7"	10	4.41	4.94	✓	✓	✓	✓
BHG8?C0750750	3/4"	7 1/2"	10	4.70	5.11	✓	✓	✓	
BHG8?C0750800	3/4"	8"	10	4.98	5.38	✓	✓	✓	✓
BHG8?C0750850	3/4"	8 1/2"	5	2.65		✓			
BHG8?C0750900	3/4"	9"	5	2.77	3.03	✓	✓	✓	✓
BHG8?C0750950	3/4"	9 1/2"	5	2.95		✓			
BHG8?C0751000	3/4"	10"	5	3.06	3.32	✓	✓	✓	
BHG8?C0751100	3/4"	11"	5	3.34		✓			
BHG8?C0751200	3/4"	12"	5	3.60		✓			
BHG8?C0751300	3/4"	13"	5	3.87		✓			
BHG8?C0751400	3/4"	14"	5	4.11		✓			
BHG8?C0751500	3/4"	15"	5	4.40		✓			

Bolt & Nut (Kit) codes start with K

? = Z: Zinc Plate (Z/P) P: Plain (PLN) / Black (Blk)

Hex Bolt & Nut Grade 8

Zinc Plate
Plain / Black



UNC HEX BOLT & NUT GRADE 8 AS2465

Part	Size	Length (inch)	Pack	BO Wgt (Kg)	Kit Wgt (Kg)	Blk BO	Blk Kit	ZP BO	ZP Kit
BHG8?C0870150	7/8"	1 1/2"	10		2.82		✓		
BHG8?C0870175	7/8"	1 3/4"	10		2.99		✓		
BHG8?C0870200	7/8"	2"	10	2.32	3.18	✓	✓	✓	
BHG8?C0870225	7/8"	2 1/4"	10	2.50	3.33	✓	✓	✓	
BHG8?C0870250	7/8"	2 1/2"	10	2.68	3.54	✓	✓	✓	
BHG8?C0870275	7/8"	2 3/4"	10	2.87		✓		✓	
BHG8?C0870300	7/8"	3"	10	3.07	3.93	✓	✓	✓	
BHG8?C0870350	7/8"	3 1/2"	10	3.45	4.31	✓	✓	✓	
BHG8?C0870375	7/8"	3 3/4"	10		4.46		✓		
BHG8?C0870400	7/8"	4"	10	3.84	4.70	✓	✓	✓	
BHG8?C0870450	7/8"	4 1/2"	10	4.22	5.08	✓	✓	✓	
BHG8?C0870500	7/8"	5"	10	4.60	5.46	✓	✓	✓	
BHG8?C0870550	7/8"	5 1/2"	10	4.99	5.85	✓	✓	✓	
BHG8?C0870600	7/8"	6"	10	5.37	6.21	✓	✓	✓	
BHG8?C0870650	7/8"	6 1/2"	5	2.88	3.25	✓	✓	✓	
BHG8?C0870700	7/8"	7"	5	3.07	3.43	✓	✓	✓	
BHG8?C0870750	7/8"	7 1/2"	5	3.26	3.62	✓	✓		
BHG8?C0870800	7/8"	8"	5	3.45	3.80	✓	✓	✓	
BHG8?C0870850	7/8"	8 1/2"	5	3.66		✓			
BHG8?C0870900	7/8"	9"	5	3.84	4.26	✓	✓		
BHG8?C0870950	7/8"	9 1/2"	5	4.03		✓			
BHG8?C0871000	7/8"	10"	5	4.22	4.64	✓	✓		
BHG8?C0871100	7/8"	11"	5	4.56		✓			
BHG8?C0871200	7/8"	12"	5	4.93		✓			
BHG8?C0871300	7/8"	13"	5	5.30		✓			
BHG8?C0871400	7/8"	14"	5	5.67		✓			



Bolt & Nut (Kit) codes start with K

? = Z: Zinc Plate (Z/P) P: Plain (PLN) / Black (Blk)





HIGH-TENSILE

Hex Bolt & Nut Grade 8

Zinc Plate
Plain / Black



UNC HEX BOLT & NUT GRADE 8 AS2465

Part	Size	Length (inch)	Pack	BO Wgt (Kg)	Kit Wgt (Kg)	Blk BO	Blk Kit	ZP BO	ZP Kit
BHG8?C1000200	1"	2"	5	1.59	2.22	✓	✓	✓	
BHG8?C1000225	1"	2 1/4"	5	1.70		✓		✓	
BHG8?C1000250	1"	2 1/2"	5	1.81	2.44	✓	✓	✓	
BHG8?C1000275	1"	2 3/4"	5	1.95		✓		✓	
BHG8?C1000300	1"	3"	5	2.07	2.73	✓	✓	✓	✓
BHG8?C1000350	1"	3 1/2"	5	2.32	2.95	✓	✓	✓	✓
BHG8?C1000400	1"	4"	5	2.57	3.23	✓	✓	✓	✓
BHG8?C1000450	1"	4 1/2"	5	2.82	3.45	✓	✓	✓	
BHG8?C1000500	1"	5"	5	3.07	3.73	✓	✓	✓	✓
BHG8?C1000550	1"	5 1/2"	5	3.32	3.95	✓	✓	✓	
BHG8?C1000600	1"	6"	5	3.57	4.23	✓	✓	✓	
BHG8?C1000650	1"	6 1/2"	5	3.82	4.48	✓	✓	✓	
BHG8?C1000700	1"	7"	5	4.07	4.73	✓	✓	✓	
BHG8?C1000750	1"	7 1/2"	5	4.32	4.90	✓	✓		
BHG8?C1000800	1"	8"	5	4.57	5.24	✓	✓	✓	
BHG8?C1000850	1"	8 1/2"	5	4.84	5.45	✓	✓		
BHG8?C1000900	1"	9"	5	5.07	5.74	✓	✓	✓	
BHG8?C1000950	1"	9 1/2"	5	5.24		✓			
BHG8?C1001000	1"	10"	5	5.57	6.24	✓	✓	✓	
BHG8?C1001100	1"	11"	5	6.04		✓			
BHG8?C1001200	1"	12"	5	6.58	7.27	✓	✓		
BHG8?C1001300	1"	13"	5	7.11		✓			
BHG8?C1001400	1"	14"	5	7.58		✓			

Bolt & Nut (Kit) codes start with K

? = Z: Zinc Plate (Z/P) P: Plain (PLN) / Black (Blk)

Hex Bolt Grade 8

Plain / Black



UNC HEX BOLT GRADE 8 AS2465

Part	Size	Length	Pack	BO Wgt	Blk BO
		(inch)		(Kg)	
BHG8PC1120250	1 1/8"	2 1/2"	5	2.42	✓
BHG8PC1120300	1 1/8"	3"	5	2.71	✓
BHG8PC1120350	1 1/8"	3 1/2"	5	3.03	✓
BHG8PC1120400	1 1/8"	4"	5	3.34	✓
BHG8PC1120450	1 1/8"	4 1/2"	5	3.66	✓
BHG8PC1120500	1 1/8"	5"	5	3.98	✓
BHG8PC1120550	1 1/8"	5 1/2"	5	4.31	✓
BHG8PC1120600	1 1/8"	6"	5	4.62	✓
BHG8PC1120650	1 1/8"	6 1/2"	5	4.95	✓
BHG8PC1120700	1 1/8"	7"	5	5.25	✓
BHG8PC1120750	1 1/8"	7 1/2"	5	5.70	✓
BHG8PC1120800	1 1/8"	8"	5	6.00	✓
BHG8PC1120900	1 1/8"	9"	5	6.75	✓
BHG8PC1121000	1 1/8"	10"	5	7.65	✓
BHG8PC1121100	1 1/8"	11"	5	8.40	✓
BHG8PC1121200	1 1/8"	12"	5	9.15	✓
BHG8PC1121400	1 1/8"	14"	1	1.94	✓
BHG8PC1121600	1 1/8"	16"	1	2.20	✓
BHG8PC1250300	1 1/4"	3"	4	2.80	✓
BHG8PC1250350	1 1/4"	3 1/2"	4	3.12	✓
BHG8PC1250400	1 1/4"	4"	4	3.43	✓
BHG8PC1250450	1 1/4"	4 1/2"	4	3.74	✓
BHG8PC1250500	1 1/4"	5"	4	4.06	✓
BHG8PC1250550	1 1/4"	5 1/2"	4	4.37	✓
BHG8PC1250600	1 1/4"	6"	4	4.68	✓
BHG8PC1250650	1 1/4"	6 1/2"	4	5.01	✓
BHG8PC1250700	1 1/4"	7"	4	5.31	✓
BHG8PC1250750	1 1/4"	7 1/2"	4	5.65	✓
BHG8PC1250800	1 1/4"	8"	4	5.94	✓
BHG8PC1250900	1 1/4"	9"	4	6.57	✓
BHG8PC1251000	1 1/4"	10"	4	7.20	✓
BHG8PC1251100	1 1/4"	11"	4	7.90	✓
BHG8PC1251200	1 1/4"	12"	4	8.61	✓
BHG8PC1251300	1 1/4"	13"	4	8.99	✓
BHG8PC1251400	1 1/4"	13"	1	2.43	✓
BHG8PC1251500	1 1/4"	15"	1	2.58	✓
BHG8PC1251600	1 1/4"	16"	1	2.74	✓



? = Z: Zinc Plate (Z/P) P: Plain (PLN) / Black (Blk)





HIGH-TENSILE

Hex Bolt Grade 8

Plain / Black



UNC HEX BOLT GRADE 8 AS2465

Part	Size	Length (inch)	Pack	BO Wgt (Kg)	Blk BO
BHG8PC1500300	1 1/2"	3"	3	3.30	✓
BHG8PC1500350	1 1/2"	3 1/2"	3	3.55	✓
BHG8PC1500400	1 1/2"	4"	3	3.95	✓
BHG8PC1500450	1 1/2"	4 1/2"	3	4.27	✓
BHG8PC1500500	1 1/2"	5"	3	4.50	✓
BHG8PC1500550	1 1/2"	5 1/2"	3	4.95	✓
BHG8PC1500600	1 1/2"	6"	3	5.30	✓
BHG8PC1500650	1 1/2"	6 1/2"	3	5.64	✓
BHG8PC1500700	1 1/2"	7"	3	5.98	✓
BHG8PC1500750	1 1/2"	7 1/2"	3	6.32	✓
BHG8PC1500800	1 1/2"	8"	3	6.66	✓
BHG8PC1500900	1 1/2"	9"	3	7.34	✓
BHG8PC1501000	1 1/2"	10"	3	8.02	✓
BHG8PC1501100	1 1/2"	11"	3	8.71	✓
BHG8PC1501200	1 1/2"	12"	3	9.38	✓
BHG8PC1501300	1 1/2"	13"	3	10.07	✓
BHG8PC1501400	1 1/2"	14"	3	10.75	✓
BHG8PC1501500	1 1/2"	15"	3	11.44	✓
BHG8PC1501600	1 1/2"	16"	3	12.12	✓
BHG8PC1750400	1 3/4"	4"	3	5.66	✓
BHG8PC1750500	1 3/4"	5"	3	6.58	✓
BHG8PC1750600	1 3/4"	6"	3	7.50	✓
BHG8PC1750700	1 3/4"	7"	1	2.88	✓
BHG8PC1750800	1 3/4"	8"	3	9.35	✓
BHG8PC1750900	1 3/4"	9"	1	3.44	✓
BHG8PC1751000	1 3/4"	10"	3	11.19	✓
BHG8PC2000400	2"	4"	2	5.17	✓
BHG8PC2000500	2"	5"	1	2.97	✓
BHG8PC2000600	2"	6"	2	6.73	✓
BHG8PC2000800	2"	8"	2	8.36	✓
BHG8PC2001000	2"	10"	2	9.95	✓
BHG8PC2001200	2"	12"	1	5.70	✓
BHG8PC2001400	2"	14"	1	6.64	✓
BHG8PC2001600	2"	16"	1	7.46	✓

? = Z: Zinc Plate (Z/P) P: Plain (PLN) / Black (Blk)

Hex Bolt & Nut Grade 8

Zinc Plate
Plain / Black



UNF HEX BOLT & NUT GRADE 8 AS2465

Part	Size	Length (inch)	Pack	BO Wgt (Kg)	Kit Wgt (Kg)	Blk BO	Blk Kit	ZP BO	ZP Kit
BHG8?F0250050	1/4"	1/2"	200	1.13		✓		✓	
BHG8?F0250075	1/4"	3/4"	200	1.37	2.06	✓	✓	✓	✓
BHG8?F0250100	1/4"	1"	200	1.66	2.34	✓	✓	✓	✓
BHG8?F0250125	1/4"	1 1/4"	200	1.98		✓		✓	
BHG8?F0250150	1/4"	1 1/2"	200	2.32	3.00	✓	✓	✓	✓
BHG8?F0250175	1/4"	1 3/4"	200	2.64		✓		✓	
BHG8?F0250200	1/4"	2"	200	2.97	3.66	✓	✓	✓	✓
BHG8?F0250225	1/4"	2 1/4"	150	2.47		✓		✓	
BHG8?F0250250	1/4"	2 1/2"	150	2.72	3.24	✓	✓	✓	✓
BHG8?F0250275	1/4"	2 3/4"	150	2.97		✓		✓	
BHG8?F0250300	1/4"	3"	150	3.22	3.73	✓	✓	✓	✓
BHG8?F0250350	1/4"	3 1/2"	100	2.47	2.82	✓	✓	✓	✓
BHG8?F0250400	1/4"	4"	100	2.89	3.23	✓	✓	✓	✓
BHG8?F0250450	1/4"	4 1/2"	100	3.13		✓		✓	
BHG8?F0250500	1/4"	5"	100	3.46		✓		✓	
BHG8?F0250550	1/4"	5 1/2"	100	3.79		✓		✓	
BHG8?F0250600	1/4"	6"	50	2.06		✓		✓	
BHG8?F0310050	5/16"	1/2"	200	1.90		✓		✓	
BHG8?F0310075	5/16"	3/4"	200	2.30	3.31	✓	✓	✓	✓
BHG8?F0310100	5/16"	1"	200	2.70	3.71	✓	✓	✓	✓
BHG8?F0310125	5/16"	1 1/4"	200	3.21	4.22	✓	✓	✓	✓
BHG8?F0310150	5/16"	1 1/2"	200	3.73	4.74	✓	✓	✓	✓
BHG8?F0310175	5/16"	1 3/4"	150	3.18	3.94	✓	✓	✓	✓
BHG8?F0310200	5/16"	2"	150	3.57	4.32	✓	✓	✓	✓
BHG8?F0310225	5/16"	2 1/4"	150	3.95		✓		✓	
BHG8?F0310250	5/16"	2 1/2"	150	4.33	5.09	✓	✓	✓	✓
BHG8?F0310275	5/16"	2 3/4"	100	3.15		✓		✓	
BHG8?F0310300	5/16"	3"	100	3.40	3.91	✓	✓	✓	✓
BHG8?F0310350	5/16"	3 1/2"	100	3.91	4.42	✓	✓	✓	✓
BHG8?F0310400	5/16"	4"	100	4.43	4.93	✓	✓	✓	✓
BHG8?F0310450	5/16"	4 1/2"	100	4.94		✓		✓	
BHG8?F0310500	5/16"	5"	100	5.45		✓		✓	
BHG8?F0310550	5/16"	5 1/2"	100	5.97		✓		✓	
BHG8?F0310600	5/16"	6"	100	6.48		✓		✓	



Bolt & Nut (Kit) codes start with K

? = Z: Zinc Plate (Z/P) P: Plain (PLN) / Black (Blk)





HIGH-TENSILE

Hex Bolt & Nut Grade 8

Zinc Plate
Plain / Black



UNF HEX BOLT & NUT GRADE 8 AS2465

Part	Size	Length (inch)	Pack	BO Wgt (Kg)	Kit Wgt (Kg)	Blk BO	Blk Kit	ZP BO	ZP Kit
BHG8?F0370050	3/8"	1/2"	200	2.79		✓		✓	
BHG8?F0370075	3/8"	3/4"	200	3.39	4.86	✓	✓	✓	✓
BHG8?F0370100	3/8"	1"	200	3.98	5.45	✓	✓	✓	✓
BHG8?F0370125	3/8"	1 1/4"	200	4.63	6.10	✓	✓	✓	✓
BHG8?F0370150	3/8"	1 1/2"	150	4.03	5.14	✓	✓	✓	✓
BHG8?F0370175	3/8"	1 3/4"	150	4.59		✓		✓	
BHG8?F0370200	3/8"	2"	100	3.43	4.16	✓	✓	✓	✓
BHG8?F0370225	3/8"	2 1/4"	100	3.80		✓		✓	
BHG8?F0370250	3/8"	2 1/2"	100	4.17	4.90	✓	✓	✓	✓
BHG8?F0370275	3/8"	2 3/4"	100	4.54		✓		✓	
BHG8?F0370300	3/8"	3"	100	4.91	5.64	✓	✓	✓	✓
BHG8?F0370350	3/8"	3 1/2"	50	2.82	3.19	✓	✓	✓	✓
BHG8?F0370400	3/8"	4"	50	3.19	3.56	✓	✓	✓	✓
BHG8?F0370450	3/8"	4 1/2"	50	3.56		✓		✓	
BHG8?F0370500	3/8"	5"	50	3.93	4.30	✓		✓	✓
BHG8?F0370550	3/8"	5 1/2"	50	4.30		✓		✓	
BHG8?F0370600	3/8"	6"	50	4.67	5.04	✓		✓	✓
BHG8?F0430075	7/16"	3/4"	100	2.42		✓		✓	
BHG8?F0430100	7/16"	1"	100	2.82	4.17	✓	✓	✓	✓
BHG8?F0430125	7/16"	1 1/4"	100	3.22		✓		✓	
BHG8?F0430150	7/16"	1 1/2"	100	3.73	5.07	✓	✓	✓	✓
BHG8?F0430175	7/16"	1 3/4"	100	4.23		✓		✓	
BHG8?F0430200	7/16"	2"	100	4.74	6.08	✓	✓	✓	✓
BHG8?F0430225	7/16"	2 1/4"	75	3.93		✓		✓	
BHG8?F0430250	7/16"	2 1/2"	75	4.31	5.32	✓	✓	✓	✓
BHG8?F0430275	7/16"	2 3/4"	75	4.69		✓		✓	
BHG8?F0430300	7/16"	3"	75	5.07	6.08	✓	✓	✓	✓
BHG8?F0430350	7/16"	3 1/2"	50	3.89	4.56	✓	✓	✓	✓
BHG8?F0430400	7/16"	4"	50	4.39	5.06	✓	✓	✓	✓
BHG8?F0430450	7/16"	4 1/2"	50	4.89		✓		✓	
BHG8?F0430500	7/16"	5"	50	5.40		✓		✓	
BHG8?F0430550	7/16"	5 1/2"	50	5.90		✓		✓	
BHG8?F0430600	7/16"	6"	50	6.41		✓		✓	

Bolt & Nut (Kit) codes start with K

? = Z: Zinc Plate (Z/P) P: Plain (PLN) / Black (Blk)

Hex Bolt & Nut Grade 8

Zinc Plate
Plain / Black



UNF HEX BOLT & NUT GRADE 8 AS2465

Part	Size	Length (inch)	Pack	BO Wgt (Kg)	Kit Wgt (Kg)	Blk BO	Blk Kit	ZP BO	ZP Kit
BHG8?F0500075	1/2"	3/4"	75	2.90	4.20	✓	✓	✓	
BHG8?F0500100	1/2"	1"	75	3.30	4.60	✓	✓	✓	✓
BHG8?F0500125	1/2"	1 1/4"	75	3.70	5.00	✓	✓	✓	✓
BHG8?F0500150	1/2"	1 1/2"	75	3.98	5.45	✓	✓	✓	✓
BHG8?F0500175	1/2"	1 3/4"	75	4.43	5.94	✓	✓	✓	✓
BHG8?F0500200	1/2"	2"	50	3.30	4.29	✓	✓	✓	✓
BHG8?F0500225	1/2"	2 1/4"	50	3.75	4.62	✓	✓	✓	✓
BHG8?F0500250	1/2"	2 1/2"	50	3.90	4.95	✓	✓	✓	✓
BHG8?F0500275	1/2"	2 3/4"	50	4.41	5.28	✓	✓	✓	✓
BHG8?F0500300	1/2"	3"	25	2.25	2.80	✓	✓	✓	✓
BHG8?F0500325	1/2"	3 1/4"	25	2.53		✓		✓	
BHG8?F0500350	1/2"	3 1/2"	25	2.58	3.13	✓	✓	✓	✓
BHG8?F0500400	1/2"	4"	25	2.88	3.46	✓	✓	✓	✓
BHG8?F0500450	1/2"	4 1/2"	25	3.35	3.79	✓	✓	✓	✓
BHG8?F0500500	1/2"	5"	25	3.68	4.12	✓	✓	✓	✓
BHG8?F0500550	1/2"	5 1/2"	25	4.01	4.45	✓	✓	✓	✓
BHG8?F0500600	1/2"	6"	25	4.34	4.78	✓	✓	✓	✓
BHG8?F0500650	1/2"	6 1/2"	20	3.59	3.94	✓	✓	✓	✓
BHG8?F0500700	1/2"	7"	20	3.85	4.20	✓	✓	✓	✓
BHG8?F0500750	1/2"	7 1/2"	20	4.10	4.45	✓		✓	✓
BHG8?F0500800	1/2"	8"	20	4.36	4.71	✓		✓	✓
BHG8?F0500900	1/2"	9"	20	5.05		✓			
BHG8?F0501000	1/2"	10"	20	5.58		✓			
BHG8?F0501100	1/2"	11"	10	3.05		✓			
BHG8?F0501200	1/2"	12"	10	3.32		✓			



UNF Grade 8

Bolt & Nut (Kit) codes start with K

? = Z: Zinc Plate (Z/P) P: Plain (PLN) / Black (Blk)





HIGH-TENSILE

Hex Bolt & Nut Grade 8

Zinc Plate
Plain / Black



UNF HEX BOLT & NUT GRADE 8 AS2465

Part	Size	Length (inch)	Pack	BO Wgt (Kg)	Kit Wgt (Kg)	Blk BO	Blk Kit	ZP BO	ZP Kit
BHG8?F0560100	9/16"	1"	25	1.34		✓		✓	
BHG8?F0560125	9/16"	1 1/4"	25	1.51		✓		✓	
BHG8?F0560150	9/16"	1 1/2"	25	1.69	2.38	✓	✓	✓	
BHG8?F0560175	9/16"	1 3/4"	25	1.89		✓		✓	
BHG8?F0560200	9/16"	2"	25	2.10	2.80	✓	✓	✓	
BHG8?F0560225	9/16"	2 1/4"	25	2.31		✓			
BHG8?F0560250	9/16"	2 1/2"	25	2.52	3.22	✓	✓	✓	
BHG8?F0560275	9/16"	2 3/4"	25	2.73		✓		✓	
BHG8?F0560300	9/16"	3"	25	2.94	3.64	✓	✓	✓	
BHG8?F0560350	9/16"	3 1/2"	25	3.35	4.05	✓	✓	✓	
BHG8?F0560400	9/16"	4"	25	3.77	4.47	✓	✓	✓	
BHG8?F0560450	9/16"	4 1/2"	15	2.51		✓		✓	
BHG8?F0560500	9/16"	5"	15	2.76	3.18	✓	✓	✓	
BHG8?F0560550	9/16"	5 1/2"	15	3.01		✓		✓	
BHG8?F0560600	9/16"	6"	15	3.26		✓		✓	
BHG8?F0620100	5/8"	1"	25	1.81		✓		✓	
BHG8?F0620125	5/8"	1 1/4"	25	2.02	2.88	✓	✓	✓	✓
BHG8?F0620150	5/8"	1 1/2"	25	2.13	3.09	✓	✓	✓	✓
BHG8?F0620175	5/8"	1 3/4"	25	2.46	3.33	✓	✓	✓	✓
BHG8?F0620200	5/8"	2"	25	2.60	3.59	✓	✓	✓	✓
BHG8?F0620225	5/8"	2 1/4"	25	2.98	3.84	✓	✓	✓	
BHG8?F0620250	5/8"	2 1/2"	25	3.08	4.10	✓	✓	✓	✓
BHG8?F0620275	5/8"	2 3/4"	25	3.49	4.36	✓	✓	✓	
BHG8?F0620300	5/8"	3"	25	3.58	4.61	✓	✓	✓	✓
BHG8?F0620325	5/8"	3 1/4"	25	4.00		✓		✓	
BHG8?F0620350	5/8"	3 1/2"	25	4.05	5.13	✓	✓	✓	✓
BHG8?F0620400	5/8"	4"	25	4.55	5.64	✓	✓	✓	✓
BHG8?F0620450	5/8"	4 1/2"	15	3.03	3.69	✓	✓	✓	
BHG8?F0620500	5/8"	5"	15	3.32	4.00	✓	✓	✓	
BHG8?F0620550	5/8"	5 1/2"	15	3.79	4.31	✓	✓	✓	
BHG8?F0620600	5/8"	6"	15	3.90	4.62	✓	✓	✓	
BHG8?F0620650	5/8"	6 1/2"	15	4.31	4.83	✓	✓	✓	
BHG8?F0620700	5/8"	7"	15	4.61	5.13	✓	✓	✓	
BHG8?F0620750	5/8"	7 1/2"	15	4.91		✓		✓	
BHG8?F0620800	5/8"	8"	15	5.21	5.73	✓	✓	✓	
BHG8?F0620900	5/8"	9"	15	5.95		✓			
BHG8?F0621000	5/8"	10"	15	6.56		✓			
BHG8?F0621100	5/8"	11"	10	4.79		✓			
BHG8?F0621200	5/8"	12"	10	5.10		✓			

Bolt & Nut (Kit) codes start with K

? = Z: Zinc Plate (Z/P) P: Plain (PLN) / Black (Blk)

Hex Bolt & Nut Grade 8

Zinc Plate
Plain / Black



UNF HEX BOLT & NUT GRADE 8 AS2465

Part	Size	Length (inch)	Pack	BO Wgt (Kg)	Kit Wgt (Kg)	Blk BO	Blk Kit	ZP BO	ZP Kit
BHG8?F0750100	3/4"	1"	25	2.92				✓	
BHG8?F0750125	3/4"	1 1/4"	25	3.22				✓	
BHG8?F0750150	3/4"	1 1/2"	25	3.53	4.90	✓	✓	✓	✓
BHG8?F0750175	3/4"	1 3/4"	25	3.84		✓		✓	
BHG8?F0750200	3/4"	2"	25	4.19	5.55	✓	✓	✓	✓
BHG8?F0750225	3/4"	2 1/4"	25	4.56	5.92	✓	✓	✓	✓
BHG8?F0750250	3/4"	2 1/2"	20	3.76	5.03	✓	✓	✓	✓
BHG8?F0750275	3/4"	2 3/4"	20	4.24		✓		✓	
BHG8?F0750300	3/4"	3"	20	4.32	5.63	✓	✓	✓	✓
BHG8?F0750350	3/4"	3 1/2"	20	5.13	5.95	✓	✓	✓	✓
BHG8?F0750400	3/4"	4"	10	2.72	3.41	✓	✓	✓	✓
BHG8?F0750450	3/4"	4 1/2"	10	3.16	3.70	✓	✓	✓	✓
BHG8?F0750500	3/4"	5"	10	3.29	4.00	✓	✓	✓	✓
BHG8?F0750550	3/4"	5 1/2"	10	3.75	4.30	✓	✓	✓	
BHG8?F0750600	3/4"	6"	10	3.85	4.59	✓	✓	✓	
BHG8?F0750650	3/4"	6 1/2"	10	4.25		✓		✓	
BHG8?F0750700	3/4"	7"	10	4.53	5.08	✓	✓	✓	
BHG8?F0750750	3/4"	7 1/2"	10	4.81				✓	
BHG8?F0750800	3/4"	8"	10	5.10	5.65	✓	✓	✓	
BHG8?F0750900	3/4"	9"	5	2.91	3.19	✓	✓	✓	
BHG8?F0751000	3/4"	10"	5	3.21	3.48	✓	✓	✓	
BHG8?F0751100	3/4"	11"	5	3.51		✓			
BHG8?F0751200	3/4"	12"	5	3.80		✓			
BHG8?F0751300	3/4"	13"	5	4.06		✓			
BHG8?F0751400	3/4"	14"	5	4.31		✓			



Bolt & Nut (Kit) codes start with K

? = Z: Zinc Plate (Z/P) P: Plain (PLN) / Black (Blk)





Hex Bolt & Nut Grade 8

Zinc Plate
Plain / Black



UNF HEX BOLT & NUT GRADE 8 AS2465

Part	Size	Length (inch)	Pack	BO Wgt (Kg)	Kit Wgt (Kg)	Blk BO	Blk Kit	ZP BO
BHG8?F0870200	7/8"	2"	10	2.43	3.31	✓	✓	✓
BHG8?F0870225	7/8"	2 1/4"	10	2.62	3.49	✓	✓	✓
BHG8?F0870250	7/8"	2 1/2"	10	2.68	3.69	✓	✓	✓
BHG8?F0870275	7/8"	2 3/4"	10	3.02		✓		✓
BHG8?F0870300	7/8"	3"	10	3.07	4.10	✓	✓	✓
BHG8?F0870325	7/8"	3 1/4"	10	3.43		✓		
BHG8?F0870350	7/8"	3 1/2"	10	3.63	4.50	✓	✓	✓
BHG8?F0870400	7/8"	4"	10	3.84	4.90	✓	✓	✓
BHG8?F0870450	7/8"	4 1/2"	10	4.22	5.31	✓	✓	✓
BHG8?F0870500	7/8"	5"	10	4.84	5.71	✓	✓	✓
BHG8?F0870550	7/8"	5 1/2"	10	5.24	6.11	✓	✓	✓
BHG8?F0870600	7/8"	6"	10	5.37	6.52	✓	✓	✓
BHG8?F0870650	7/8"	6 1/2"	5	2.98	3.42	✓	✓	✓
BHG8?F0870700	7/8"	7"	5	3.17	3.61	✓	✓	✓
BHG8?F0870750	7/8"	7 1/2"	5	3.36		✓		
BHG8?F0870800	7/8"	8"	5	3.55		✓		✓
BHG8?F0870850	7/8"	8 1/2"	5	3.83		✓		
BHG8?F0870900	7/8"	9"	5	4.03		✓		
BHG8?F0871000	7/8"	10"	5	4.44		✓		
BHG8?F0871200	7/8"	12"	5	5.17		✓		

Bolt & Nut (Kit) codes start with K

? = Z: Zinc Plate (Z/P) P: Plain (PLN) / Black (Blk)

Hex Bolt & Nut Grade 8

Zinc Plate
Plain / Black



UNF HEX BOLT & NUT GRADE 8 AS2465

Part	Size 1"-14 TPI	Length (inch)	Pack	BO Wgt	Kit Wgt	Blk BO	Blk Kit	ZP BO
				(Kg)	(Kg)			
BHG8?F1000200F	1"	2"	5	1.67	2.33	✓	✓	✓
BHG8?F1000225F	1"	2 1/4"	5	1.78		✓		✓
BHG8?F1000250F	1"	2 1/2"	5	1.90	2.57	✓	✓	✓
BHG8?F1000275F	1"	2 3/4"	5	2.04				✓
BHG8?F1000300F	1"	3"	5	2.17	2.83	✓	✓	✓
BHG8?F1000350F	1"	3 1/2"	5	2.43	3.09	✓	✓	✓
BHG8?F1000400F	1"	4"	5	2.69	3.36	✓	✓	✓
BHG8?F1000450F	1"	4 1/2"	5	2.96	3.62	✓	✓	✓
BHG8?F1000500F	1"	5"	5	3.22	3.88	✓	✓	✓
BHG8?F1000550F	1"	5 1/2"	5	3.48	4.15	✓	✓	✓
BHG8?F1000600F	1"	6"	5	3.75	4.41	✓	✓	✓
BHG8?F1000650F	1"	6 1/2"	5	3.98	4.64	✓	✓	✓
BHG8?F1000700F	1"	7"	5	4.22	4.88	✓	✓	✓
BHG8?F1000750F	1"	7 1/2"	5	4.48		✓		
BHG8?F1000800F	1"	8"	5	4.74	5.40	✓	✓	✓
BHG8?F1000850F	1"	8 1/2"	5	5.06		✓		
BHG8?F1000900F	1"	9"	5	5.33	5.99	✓	✓	✓
BHG8?F1000950F	1"	9 1/2"	5	5.59		✓		
BHG8?F1001000F	1"	10"	5	5.85	6.51	✓	✓	✓
BHG8?F1001100F	1"	11"	5	6.43		✓		
BHG8?F1001200F	1"	12"	5	6.97		✓		
BHG8?F1120300	1 1/8"	3"	5	2.70		✓		
BHG8?F1120350	1 1/8"	3 1/2"	5	3.11		✓		
BHG8?F1120400	1 1/8"	4"	5	3.43		✓		
BHG8?F1120450	1 1/8"	4 1/2"	5	3.75		✓		
BHG8?F1120500	1 1/8"	5"	5	4.04		✓		
BHG8?F1120550	1 1/8"	5 1/2"	5	4.36		✓		
BHG8?F1120600	1 1/8"	6"	5	4.65		✓		
BHG8?F1120650	1 1/8"	6 1/2"	5	5.20		✓		
BHG8?F1120700	1 1/8"	7"	5	5.27		✓		
BHG8?F1120750	1 1/8"	7 1/2"	5	5.85		✓		
BHG8?F1120800	1 1/8"	8"	3	3.53		✓		
BHG8?F1120900	1 1/8"	9"	1	1.30		✓		
BHG8?F1121000	1 1/8"	10"	3	4.26		✓		



Bolt & Nut (Kit) codes start with K

? = Z: Zinc Plate (Z/P) P: Plain (PLN) / Black (Blk)





Hex Bolt Grade 8

Plain / Black



UNF HEX BOLT GRADE 8 AS2465

Part	Size	Length (inch)	Pack	BO Wgt (Kg)	Blk BO
BHG8PF1250300	1 1/4"	3"	5	3.67	✓
BHG8PF1250350	1 1/4"	3 1/2"	5	4.04	✓
BHG8PF1250400	1 1/4"	4"	5	4.43	✓
BHG8PF1250450	1 1/4"	4 1/2"	5	4.81	✓
BHG8PF1250500	1 1/4"	5"	5	5.20	✓
BHG8PF1250550	1 1/4"	5 1/2"	5	5.56	✓
BHG8PF1250600	1 1/4"	6"	5	5.95	✓
BHG8PF1250650	1 1/4"	6 1/2"	5	6.63	✓
BHG8PF1250700	1 1/4"	7"	5	6.70	✓
BHG8PF1250750	1 1/4"	7 1/2"	5	7.41	✓
BHG8PF1250800	1 1/4"	8"	3	4.47	✓
BHG8PF1250900	1 1/4"	9"	3	4.93	✓
BHG8PF1251000	1 1/4"	10"	1	1.79	✓
BHG8PF1500450	1 1/2"	4 1/2"	5	7.11	✓
BHG8PF1500500	1 1/2"	5"	3	4.51	✓
BHG8PF1500600	1 1/2"	6"	3	5.28	✓
BHG8PF1500900	1 1/2"	9"	2	4.90	✓
BHG8PF1501000	1 1/2"	10"	2	5.35	✓

? = Z: Zinc Plate (Z/P) P: Plain (PLN) / Black (Blk)

Hex Bolt Class 10.9

Plain / Black



HEX BOLT CLASS 10.9 AS1110.1

Part	Size	Length	Thread	Pack	Pack Wgt	Stock
		(mm)	(mm)		(Kg)	PLN
BH10PCM160030	M16	30	30	25	2.13	✓
BH10PCM160035	M16	35	35	25	2.30	✓
BH10PCM160040	M16	40	40	25	2.50	✓
BH10PCM160045	M16	45	38	25	2.70	✓
BH10PCM160050	M16	50	38	25	2.88	✓
BH10PCM160055	M16	55	38	25	3.08	✓
BH10PCM160060	M16	60	38	25	3.28	✓
BH10PCM160065	M16	65	38	25	3.45	✓
BH10PCM160070	M16	70	38	25	3.65	✓
BH10PCM160075	M16	75	38	25	3.85	✓
BH10PCM160080	M16	80	38	25	4.03	✓
BH10PCM160090	M16	90	38	25	4.43	✓
BH10PCM160100	M16	100	38	25	4.80	✓
BH10PCM160110	M16	110	38	15	3.11	✓
BH10PCM160120	M16	120	38	15	3.35	✓
BH10PCM160130	M16	130	44	15	3.57	✓
BH10PCM160140	M16	140	44	15	3.80	✓
BH10PCM160150	M16	150	44	15	4.04	✓



? = Z: Zinc Plate (Z/P) P: Plain (PLN) / Black (Blk)





HIGH-TENSILE



Hex Bolt Class 10.9

Plain / Black

HEX BOLT CLASS 10.9 AS1110.1

Part	Size	Length	Thread	Pack	Pack Wgt (Kg)	Stock PLN
		(mm)	(mm)			
BH10PCM200040	M20	40	40	25	4.30	✓
BH10PCM200045	M20	45	45	25	4.60	✓
BH10PCM200050	M20	50	46	25	4.90	✓
BH10PCM200055	M20	55	46	25	5.20	✓
BH10PCM200060	M20	60	46	25	5.50	✓
BH10PCM200065	M20	65	46	20	4.64	✓
BH10PCM200070	M20	70	46	20	4.88	✓
BH10PCM200075	M20	75	46	20	5.12	✓
BH10PCM200080	M20	80	46	20	5.36	✓
BH10PCM200085	M20	85	46	20	5.60	✓
BH10PCM200090	M20	90	46	20	5.84	✓
BH10PCM200100	M20	100	46	10	3.16	✓
BH10PCM200110	M20	110	46	10	3.40	✓
BH10PCM200120	M20	120	46	10	3.64	✓
BH10PCM200130	M20	130	52	10	3.88	✓
BH10PCM200140	M20	140	52	10	4.12	✓
BH10PCM200150	M20	150	52	10	4.36	✓
BH10PCM200160	M20	160	52	10	4.60	✓
BH10PCM200180	M20	180	52	10	5.08	✓
BH10PCM200200	M20	200	52	10	5.56	✓
BH10PCM200220	M20	220	65	10	6.04	✓
BH10PCM200230	M20	230	65	10	6.28	✓
BH10PCM200240	M20	240	65	10	6.52	✓
BH10PCM200250	M20	250	65	10	6.76	✓
BH10PCM200260	M20	260	65	10	7.00	✓
BH10PCM200280	M20	280	65	10	7.48	✓
BH10PCM200300	M20	300	65	10	7.96	✓

? = Z: Zinc Plate (Z/P) P: Plain (PLN) / Black (Blk)

Hex Bolt Class 10.9

Plain / Black



HEX BOLT CLASS 10.9 AS1110.1

Part	Size	Length	Thread	Pack	Pack Wgt	Stock
		(mm)	(mm)		(Kg)	PLN
BH10PCM220070	M22	70	50	5	1.41	✓
BH10PCM220080	M22	80	50	5	1.56	✓
BH10PCM220100	M22	100	50	5	1.85	✓
BH10PCM220150	M22	150	56	5	2.55	✓
BH10PCM220190	M22	190	56	5	3.15	✓
BH10PCM220200	M22	200	56	5	3.30	✓
BH10PCM240050	M24	50	50	5	1.52	✓
BH10PCM240055	M24	55	55	5	1.61	✓
BH10PCM240060	M24	60	60	5	1.69	✓
BH10PCM240065	M24	65	54	5	1.78	✓
BH10PCM240070	M24	70	54	5	1.87	✓
BH10PCM240075	M24	75	54	5	1.95	✓
BH10PCM240080	M24	80	54	5	2.04	✓
BH10PCM240090	M24	90	54	5	2.21	✓
BH10PCM240100	M24	100	54	5	2.39	✓
BH10PCM240110	M24	110	54	5	2.56	✓
BH10PCM240120	M24	120	54	5	2.73	✓
BH10PCM240130	M24	130	60	5	2.91	✓
BH10PCM240140	M24	140	60	5	3.08	✓
BH10PCM240150	M24	150	60	5	3.26	✓
BH10PCM240160	M24	160	60	5	3.43	✓
BH10PCM240170	M24	170	60	5	3.60	✓
BH10PCM240180	M24	180	60	5	3.78	✓
BH10PCM240190	M24	190	60	5	3.95	✓
BH10PCM240200	M24	200	60	5	4.12	✓
BH10PCM240220	M24	220	73	5	4.47	✓
BH10PCM240230	M24	230	73	5	4.64	✓
BH10PCM240240	M24	240	73	5	4.82	✓
BH10PCM240250	M24	250	73	5	4.99	✓
BH10PCM240260	M24	260	73	5	5.16	✓
BH10PCM240280	M24	280	73	5	5.51	✓
BH10PCM240300	M24	300	73	5	5.86	✓



? = Z: Zinc Plate (Z/P) P: Plain (PLN) / Black (Blk)





HIGH-TENSILE

Hex Bolt Class 10.9

Plain / Black



HEX BOLT CLASS 10.9 AS1110.1

Part	Size	Length	Thread	Pack	Pack Wgt (Kg)	Stock PLN
		(mm)	(mm)			
BH10PCM270080	M27	80	60	5	2.70	✓
BH10PCM270100	M27	100	60	5	3.14	✓
BH10PCM270110	M27	110	60	5	3.36	✓
BH10PCM270120	M27	120	60	5	3.58	✓
BH10PCM270130	M27	130	66	5	3.80	✓
BH10PCM270170	M27	170	66	5	4.68	✓
BH10PCM270180	M27	180	66	5	4.73	✓
BH10PCM300050	M30	50	50	5	2.68	✓
BH10PCM300055	M30	55	55	5	2.82	✓
BH10PCM300060	M30	60	60	5	2.95	✓
BH10PCM300065	M30	65	65	5	3.09	✓
BH10PCM300070	M30	70	66	5	3.23	✓
BH10PCM300075	M30	75	66	5	3.36	✓
BH10PCM300080	M30	80	66	5	3.50	✓
BH10PCM300085	M30	85	66	5	3.63	✓
BH10PCM300090	M30	90	66	5	3.77	✓
BH10PCM300100	M30	100	66	5	4.04	✓
BH10PCM300110	M30	110	66	5	4.32	✓
BH10PCM300120	M30	120	66	5	4.59	✓
BH10PCM300130	M30	130	72	5	4.86	✓
BH10PCM300140	M30	140	72	5	5.13	✓
BH10PCM300150	M30	150	72	5	5.41	✓
BH10PCM300160	M30	160	72	5	5.68	✓
BH10PCM300170	M30	170	72	5	5.95	✓
BH10PCM300180	M30	180	72	5	6.22	✓
BH10PCM300200	M30	200	72	5	6.77	✓
BH10PCM300210	M30	210	85	5	7.04	✓
BH10PCM300220	M30	220	85	5	7.31	✓
BH10PCM300230	M30	230	85	5	7.59	✓
BH10PCM300240	M30	240	85	5	7.86	✓
BH10PCM300250	M30	250	85	5	8.13	✓
BH10PCM300270	M30	270	85	5	8.68	✓
BH10PCM300275	M30	275	85	5	8.81	✓
BH10PCM300280	M30	280	85	5	8.95	✓
BH10PCM300300	M30	300	85	1	1.86	✓
BH10PCM330100	M33	100	72	1	0.95	✓
BH10PCM330160	M33	160	78	1	1.35	✓
BH10PCM330180	M33	180	78	1	1.48	✓
BH10PCM330260	M33	260	91	1	2.02	✓
BH10PCM330300	M33	300	91	1	2.29	✓

? = Z: Zinc Plate (Z/P) P: Plain (PLN) / Black (Blk)

Hex Bolt Class 10.9

Plain / Black



HEX BOLT CLASS 10.9 AS1110.1

Part	Size	Length	Thread	Pack	Pack Wgt	Stock
		(mm)	(mm)		(Kg)	PLN
BH10PCM360075	M36	75	75	2	2.09	✓
BH10PCM360080	M36	80	80	2	2.16	✓
BH10PCM360090	M36	90	78	2	2.32	✓
BH10PCM360100	M36	100	78	2	2.48	✓
BH10PCM360110	M36	110	78	2	2.64	✓
BH10PCM360120	M36	120	78	2	2.80	✓
BH10PCM360130	M36	130	84	2	2.95	✓
BH10PCM360140	M36	140	84	2	3.11	✓
BH10PCM360150	M36	150	84	2	3.27	✓
BH10PCM360160	M36	160	84	2	3.43	✓
BH10PCM360165	M36	165	84	2	3.50	✓
BH10PCM360170	M36	170	84	2	3.58	✓
BH10PCM360180	M36	180	84	2	3.74	✓
BH10PCM360190	M36	190	84	2	3.90	✓
BH10PCM360200	M36	200	84	2	4.06	✓
BH10PCM360210	M36	210	97	2	4.21	✓
BH10PCM360240	M36	240	97	2	4.69	✓
BH10PCM360250	M36	250	97	2	4.84	✓
BH10PCM360260	M36	260	97	2	5.00	✓
BH10PCM360280	M36	280	97	2	5.32	✓
BH10PCM360285	M36	285	97	2	5.40	✓
BH10PCM360290	M36	290	97	2	5.47	✓
BH10PCM360300	M36	300	97	2	5.63	✓
BH10PCM360320	M36	320	97	2	5.95	✓
BH10PCM420130	M42	130	96	1	1.95	✓
BH10PCM420150	M42	150	96	1	2.16	✓
BH10PCM420160	M42	160	96	1	2.27	✓
BH10PCM420180	M42	180	96	1	2.48	✓
BH10PCM420200	M42	200	96	1	2.69	✓
BH10PCM420220	M42	220	109	1	2.91	✓
BH10PCM420230	M42	230	109	1	3.02	✓
BH10PCM420240	M42	240	109	1	3.12	✓
BH10PCM420250	M42	250	109	1	3.23	✓
BH10PCM420270	M42	270	109	1	3.44	✓
BH10PCM420300	M42	300	109	1	3.77	✓
BH10PCM420340	M42	340	109	1	4.19	✓
BH10PCM480180	M48	180	108	1	3.43	✓
BH10PCM480190	M48	190	108	1	3.58	✓
BH10PCM480200	M48	200	108	1	3.73	✓
BH10PCM480220	M48	220	121	1	4.03	✓
BH10PCM480250	M48	250	121	1	4.47	✓
BH10PCM480260	M48	260	121	1	4.62	✓



? = Z: Zinc Plate (Z/P) P: Plain (PLN) / Black (Blk)

